

F. No. 33-33/2016-MIDH (AAP)
Government of India
Ministry of Agriculture
Department of Agriculture & Cooperation
(Horticulture Division)

Room No-434
Krishi Bhawan, New Delhi-1
Dated: 31st January, 2017

To

The Director & Mission Director (MIDH)
Directorate of Horticulture
Government of Nagaland
Kohima-797001.

Subject: Proposal for inter-component changes of the targets under approved components for Nagaland under MIDH for the year 2016-17 – reg.

Sir,

I am directed to refer to your Letter No. HR/MIDH/AP-6/3/16 dated 26.09.2016 on the subject cited above and to convey approval of competent authority for inter-component changes in physical targets in Annual Action Plan (AAP) 2016-17 as under:

S.NO	Activities	Unit	Phy Target		Diff	Fin Outlay		Diff	% of outlay
			Old	Rev		Old	Rev		
			Rs. In Lakhs						
1	R&D		2.0	2.0	0	51.3	51.3	0.0	1.5
2	Nursery and planting Materials	No.	13.0	13.0	0	105.0	105.0	0.0	3.0
3	Establishment of new gardens / Area Expansion	Ha.	2150.0	2150.0	0	648.8	648.8	0.0	18.5
4	Mushroom		2.0	2.0	0	40.0	40.0	0.0	1.1
5	Maintenances 1 & 2 Year	Ha.	1237.0	1698.0	461	141.6	187.7	46.1	5.4
6	Rejuvenation/ replanting	Ha.	200.0	200.0	0	40.0	40.0	0.0	1.1
7	Creation of Water resources	No.	66.0	66.0	0	159.5	159.5	0.0	4.6
8	Protected cultivation	Ha.	15.0	15.0	0	647.4	647.4	0.0	18.5
9	Promotion of IPM/INM	Ha.	2700.0	2700.0	0	32.4	32.4	0.0	0.9
10	Adoption of Org Farm + Vermi compost Units	Ha.	0.0	0.0	0	0.0	0.0	0.0	0.0
11	Centre of Excellence	No.	0.0	0.0	0	0.0	0.0	0.0	0.0
12	Beekeeping	No.	4200.0	4200.0	0	48.0	48.0	0.0	1.4
13	Horticulture Mechanization	No.	1.0	1.0	0	200.0	200.0	0.0	5.7
15	Human Resource Development (HRD)	No.	1962.0	1962.0	0	89.8	89.8	0.0	2.6
16	Post Harvest Management	No.	495.0	469.0	-26	815.1	769.1	-46.0	22.0
17	Markets	No.	21.0	21.0	0	152.8	152.8	0.0	4.4
18	Food Processing		0.0	0.0	0	0.0	0.0	0.0	0.0
19	Awareness, survey, Special Intervention etc.		124.0	135.0	11	155.0	155.0	0.0	4.4
20	Mission Management		1.0	1.0	0	173.5	173.4	-0.1	5.0
21	Institutional Strengthening		0.0	0.0	0	0.0	0.0	0.0	0.0
22	Technical Support Group (TSG) at State Level			0.0	0	0.0	0.0	0.0	0.0
	Total		13189.0	13635.0	446	3500.0	3500.0	0.0	100.0
	Committed liabilities		3130.0	3130.0	0	1568.7	1568.7	0.0	
	G. Total		16319.0	16765.0	446	5068.7	5068.7	0.0	

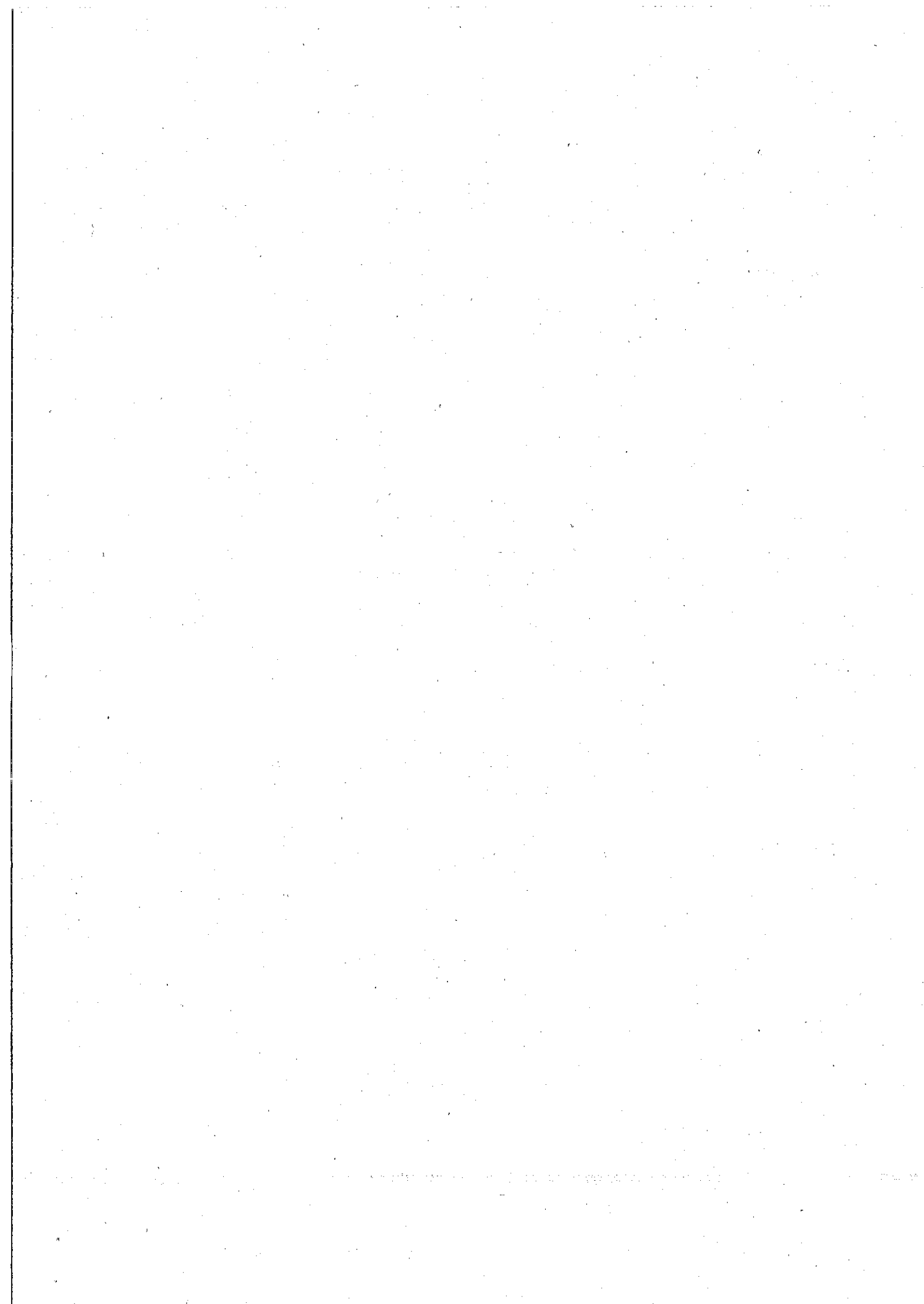
2. There is no change in the Financial Outlay.

3. It is requested that revised AAP may be implemented as per the provisions and norms of the NHM scheme. Revised AAP 2016-17 as enclosed is being uploaded on the NHM website.

Yours faithfully,



(M.K. Mishra)
Under Secretary (MIDH)
Ph. No. 011-23074238
Email: mrityunjaya.m@nic.in



Component wise details for Physical Target and Financial outlay approved for Implementation of NHM Programmes during 2016-17										
NAGALAND 2016-17										
S. No	Activity	Maximum permissible	Pattern of Assistance	Phy Target	Financial Outlay	GOI Share 90%	State Share 10%	Committed/Spill over liabilities	Remark	(Rs. in Lakhs)
1	RESEARCH & DEVELOPMENT	3	4							
		Rs. 100.00 lakh/Project	Central Government Institutes under ICAR, CSIR, SAUs, National level Govt. agencies and others location specific Institutes will take up need based applied research & development works in the areas of (i) Seed & Planting material including import of planting material (ii) Technology standardization and (iii) Technology acquisition and (iv) imparting training and FLD, on project mode, with 100% assistance.							
	Management of viral diseases and productivity			1.0	22.9	20.6	2.3			
	Total			1.0	28.4	25.6	2.8			
				2.0	51.3	46.1	5.1			
1	Plantation Infrastructure and Development									
	Production of planting material Public Sector									
	Hi-tech nursery (4ha)									
	a) Public Sector	Rs. 25.00 lakh/ha	100% to public sector limited to Rs. 100 lakh/unit and in case of private sector, credit linked back-ended subsidy @ 40% of cost, subject to a maximum of Rs. 40 lakh/unit, for a maximum of 4 ha. as project based activity on prorata basis. Each nursery will produce a minimum of 50,000 numbers per hectare of mandated perennial fruit crops/ tree species/ aromatic trees/plantation crops per year, duly certified for its quality.		0.0	0.0	0.0	4.0	100.0	
	b) Private Sector	Rs. 25 lakh/ha unit	100% to public sector limited to Rs. 100 lakh/unit and in case of private sector, credit linked back-ended subsidy @ 40% of cost, subject to a maximum of Rs. 40 lakh/unit, for a maximum of 4 ha. as project based activity on prorata basis. Each nursery will produce a minimum of 50,000 numbers per hectare of mandated perennial fruit crops/ tree species/ aromatic trees/plantation crops per year, duly certified for its quality.		0.0	0.0	0.0			
	Upgrading nursery Infrastructure to meet accreditation norms (4 ha)									
	a) Public Sector	Up to Rs. 10.00 lakh/nursery of 4 ha, on prorata basis	100% of Public Sector	8.0	80.0	72.0	8.0			
	b) Private sector	Up to Rs. 10.00 lakh/nursery of 4 ha, on prorata basis	50% of cost to Private sector subject to a maximum of Rs. 5.00 lakh/nursery.	5.0	25.0	22.5	2.5			
	Sub-total Planting material			13.0	105.0	94.5	10.5	4.0	100.0	
2	Establishment of new gardens / Area Expansion									
	Fruit crops other than cost intensive crops using normal spacing (For a maximum area of 4 Fruits - Perennials)									
	(a) Cost intensive crops									
	Fruit crops like Grape, Kiwi, Passion fruit etc.									
	a) Integrated package with drip irrigation and trellis. (kiwi)	Rs. 4.00 lakh/ha.	Maximum of Rs. 1.60 lakh/- per ha. (40% of cost) for meeting the expenditure on planting material and cost of material for drip irrigation, trellis and INM/IPM, in 3 installments of 60:20:20 subject to survival rate of 75% in 2 nd year and 90% in 3 rd year.	100.0	120.0	108.0	12.0			

akashw

b) Without integration (Passion/fruit)	Rs. 1.25 lakh/ha	Maximum of Rs. 0.50 lakh/ha (40% of cost) for meeting the expenditure on planting material and cost of INM/PPM in three installments of 60:20:20 subject to survival rate of 75% in 2 nd year and 90% in 3 rd year. For (a) and (b) above, in the case of TSP areas, Andaman & Nicobar and Lakshadweep Islands, assistance will be @ 50% of cost.	100.0	37.5	33.8	3.8				
	Sub total		200.0	157.5	141.8	15.3	0.0	0.0		
	Maintenance with Integration									
1st Year				0.0	0.0	0.0				
2nd Year			30.0	12.0	10.8	1.2				
	Maintenance without Integration									
1st Year (Kawi and passion fruit)			150.0	18.8	16.9	1.9				
2nd Year			70.0	8.8	7.9	0.9				
	Sub total maintenance		250.0	39.5	35.6	4.0	0.0	0.0		
	iii) Banana (sucker)									
a) Integrated package with drip irrigation.	Rs. 2.00 lakh/ha	Maximum of Rs. 0.80 lakh/ha (40% of the cost) for meeting expenditure on planting material, drip irrigation and cost of material for INM/PPM, in 2 installments (75:25).		0.0	0.0	0.0				
b) Without integration	Rs. 87,500/ha	Maximum of Rs. 0.35 lakh/ha (40% of cost) for meeting the expenditure on planting material and cost of INM/PPM in 2 installments (75:25). For (a) and (b) above, in the case of TSP areas, Andaman & Nicobar and Lakshadweep Islands,	200.0	65.6	59.1	6.6				
	Sub total		200.0	65.6	59.1	6.6	0.0	0.0		
	Maintenance without Integration									
1st Year			200.0	21.9	19.7	2.2				
	Sub total maintenance		200.0	21.9	19.7	2.2				
	iv) Pineapple (sucker)									
a) Integrated package with drip irrigation.	Rs. 3.00 lakh/ha	Maximum of Rs. 1.20 lakh/ha (40% of the cost) for meeting expenditure on planting material, drip irrigation and cost of material for INM/PPM, in 2 installments.		0.0	0.0	0.0				
b) Without integration	Rs. 87,500/ha	Maximum of Rs. 0.35 lakh/ha (40% of cost) for meeting the expenditure on planting material and cost of INM/PPM in 2 installments (75:25). For (a) and (b) above, in the case of TSP areas, Andaman & Nicobar and Lakshadweep Islands, assistance will be @ 50% of cost in 2 installments (75:25).	200.0	65.6	59.1	6.6				
	Sub total		200.0	65.6	59.1	6.6	0.0	0.0		
	Maintenance without Integration									
1st Year			200.0	21.9	19.7	2.2				
	Sub total maintenance		200.0	21.9	19.7	2.2				
	v) Banana (TC)									
a) Integrated package with drip irrigation.	Rs. 3.00 lakh/ha	Maximum of Rs. 1.20 lakh/ha (40% of cost) for meeting the expenditure on planting material and cost of material for drip system, INM/PPM etc., in 2 installments (75:25).		0.0	0.0	0.0				
b) Without integration	Rs. 1.25 lakh/ha.	Max. of Rs. 0.50 lakh per ha, (40% of cost) for meeting the expenditure on planting material and cost of INM/PPM in 2 installments (75:25). For (a) and (b) above, in the case of TSP areas, Andaman & Nicobar and Lakshadweep Islands, assistance will be @ 50% of cost in 2 installments (75:25).		0.0	0.0	0.0				
	Sub total		0.0	0.0	0.0	0.0	0.0	0.0	0.0	0.0

Subtotal

	mega mircha	Rs.30,000/ha	Maximum of Rs. 12,000/- per ha. (40% of cost) for meeting the expenditure on planting material and cost of material for INM/PMI etc).	150.0	22.5	20.3	2.3												
	ginger			100.0	15.0	13.5	1.5												
	turneric			50.0	7.5	6.8	0.8												
	cherry pepper				0.0	0.0	0.0												
	Perennial spices (large cardamum)	Rs. 50,000/ha	Maximum of Rs. 20,000/- per ha (@40% of cost) for meeting the expenditure on planting material and cost of material for INM/PMI etc. For (i) and (ii) above, in the case of TSP areas, Andaman and Lakshadweep Islands, assistance will be @ 50% of cost.	250.0	62.5	56.3	6.3												
	Sub-total spices			550.0	107.5	96.8	10.8	0.0	0.0										
	Plantation crops (For a maximum area of 4 ha per beneficiary)																		
	Cashew	Rs. 1.00 lakh/ha	Rs. 0.40 lakh per ha (40% of cost) for meeting the expenditure on planting material and cost of material for drip system, INM/PMI etc). In 3 installments of 60:20:20 subject to survival rate of 50% in second year and 90% in third year.		0.0	0.0	0.0												
	a) Integrated package with drip irrigation																		
	b) Without integration	Rs. 50,000/ha	Rs.0.20 lakh per ha (40% of cost) for meeting the expenditure on planting material and cost of material for INM/PMI in 3 installments of 60:20:20 subject to survival rate of 75% in second year and 90% in third year for a maximum area of 4 ha per beneficiary. For (a) and (b) above, in the case of TSP areas, Andaman & Nicobar and Lakshadweep Islands assistance will be @ 50% of cost. In 3 installments.	50.0	7.5	6.8	0.8												
	Sub-total	do		50.0	7.5	6.8	0.8	0.0	0.0										
	Cashew	do		100.0	5.0	4.5	0.5												
	Cocoa	do			0.0	0.0	0.0												
	Sub-total Maintenance			100.0	5.0	4.5	0.5												
	Grand Total Area Expansion			2150.0	648.8	583.9	64.9	0.0	0.0										
	Grand Total Area Expansion maintenance			1698.0	187.7	168.9	18.8	0.0	0.0										
	Mushrooms																		
	Production unit																		
	Public Sector	Rs. 20.00 lakh/ unit	100% of the cost.	2.0	40.0	36.0	4.0												
	Private Sector	Rs. 20.00 lakh/ unit	40% of cost for private sector, for meeting the expenditure on infrastructure, as credit linked back ended subsidy.		0.0	0.0	0.0												
	Sub-total mushrooms			2.0	40.0	36.0	4.0	0.0	0.0										
5	Rejuvenation/ replacement of senile plantation including Canopy management. Marao	Rs. 40,000/ha	50% of the total cost subject to a maximum of Rs. 20,000/ha limited to two ha per beneficiary.	200.0	40.0	36.0	4.0	0.0	0.0										
	Sub-total	4		200.0	40.0	36.0	4.0	0.0	0.0										
	Creation of Water resources																		
	Community tanks																		
	i) Community tanks on farm ponds/ on farm water reservoirs with use of plastic/RCC lining -																		
	Community tanks on farm ponds/ on farm water reservoirs with use of plastic/RCC lining																		
	Plain areas	Rs. 20.00 lakh in plain areas	100% of cost for 10 ha command		0.0	0.0	0.0												

2/15/19

Hilly areas.	Rs. 25 lakh/ unit for Hilly areas.	100% of cost for 10 ha command areas.	11.0	110.0	99.0	11.0	5.0	125.0	
ii) Water harvesting system for individuals- for storage of water in 20mx20mx3m									
Plain areas	Rs. 1.50 lakh/unit in plain areas and	50% of cost. Maintenance to be ensured by the beneficiary.		0.0	0.0	0.0	0.0		
Hilly areas.	Rs. 1.80 lakh/unit in hilly areas	50% of cost. Maintenance to be ensured by the beneficiary.	55.0	49.5	44.6	5.0			
Sub-total			66.0	159.5	143.6	16.0	5.0	125.0	
5									
(b) Naturally ventilated system									
(i) Tubular structure									
	Rs. 1060/Sq.m (up to 500 Sq. m)	50% of the cost limited to 4000 Sq.m per beneficiary.		0.0	0.0	0.0	0.0		
Hilly areas.	Rs. 1060/Sq.m (up to 500 Sq. m)	50% of the cost limited to 4000 Sq.m per beneficiary.	7.0	426.7	384.0	42.7	2.5	152.4	
(j) Cost of planting material & cultivation of high value vegetables grown in poly house									
	Rs. 700/Sq.m	50% of cost limited to 4000 Sq. m per beneficiary.	3.0	105.0	94.5	10.5	0.8	26.3	
(g) Cost of planting material & cultivation of Orchid & Anthurium under poly house/shade net house.									
	Rs. 610/Sq.m	50% of cost limited to 4000 Sq. m per beneficiary.	1.0	30.5	27.5	3.1	0.3	7.6	
(h) Cost of planting material & cultivation of Carnation & Gerbera under poly house/shade net house.									
	Rs. 426/Sq.m	50% of cost limited to 4000 Sq. m per beneficiary.	4.0	85.2	76.7	8.5	1.0	21.3	
(i) Cost of planting material & cultivation of Rose and lilium under poly house/shade net house									
Sub-total protected cultivation									
			15.0	647.4	582.6	64.7	5.0	211.1	
6									
Promotion of Integrated Nutrient Management (INM)/ Integrated Pest Management (IPM)									
Promotion of IPM									
	Rs. 4000/ha	30% of cost subject to a maximum of Rs 1200/ha limited to 4.00 ha/ beneficiary.	1350.0	16.2	14.6	1.6			
Promotion of INM									
	Rs. 4000/ha	30% of cost subject to a maximum of Rs 1200/ha limited to 4.00 ha/ beneficiary.	1350.0	16.2	14.6	1.6			
Disease forecasting unit (PSUs)									
	Rs. 6.00 lakh/unit	100 % of costs.		0.0	0.0	0.0			
Sub-total INM /IPM									
	Rs. 10,000/ ha	50% of the cost for maximum of 4ha/beneficiary.	2700.0	32.4	29.2	3.2	0.0	0.0	
Certification for Good Agricultural Practices (GAP), Including Infrastructure									
CoE									
Pritseno. Phak									
Chanchang Hakchang village, Tuensang									
SHN, Dingapur									
Total CoE									
			0.0	0.0	0.0	0.0	1.0	100.0	
			0.0	0.0	0.0	0.0	3.0	500.0	
8									
Pollination support through beekeeping									
Production of nucleus stock (Public sector)									
	Rs. 20.00 lakh	100% of the cost.		0.0	0.0	0.0	0.0		
Production of bee colonies by bee breeder									
	Rs. 10.00 lakh	40% of cost for producing min. of 2000 colonies / year		0.0	0.0	0.0	0.0		

Subs Wm

	Honey bee colony	Rs. 2000/colony of 8 frames	40% of cost limited to 50 colonies / beneficiary.	2000.0	16.0	14.4	1.6	1000.0	8.0	
	Hives	Rs 2000/ per hive.	40% of cost limited to 50 colonies / beneficiary.	2000.0	16.0	14.4	1.6	1000.0	8.0	
	Equipment including honey extractor (4 frame), food grade container (30 kg), net, etc.	Rs. 20,000/set	40% of the cost limited to one set per beneficiary.	200.0	16.0	14.4	1.6	100.0	8.0	
	Sub-total			4200.0	48.0	43.2	4.8	2100.0	24.0	
9	Horticulture Mechanization									
	Power operated machines/tools/power machine up to BHP with rotator and 20 hp with accessories.								1.0	50.0
	Sub-total			1.0	200.0	180.0	20.0	20.0	1.0	50.0
	Technology Dissemination through demonstration/ Front Line Demonstration (FLD)	Rs. 25.00 lakh	75 % of cost in farmers' field and 100% of cost in farms belonging to Public Sector, SAs etc. No change							
	FIDC Public sector					0.0	0.0			
	FIDC private sector									
	Wild Goose berry							1.0	18.8	
	Wild Apple							1.0	18.8	
	Monkey bean							1.0	18.8	
	sub total				0.0	0.0	0.0	3.0	56.3	
10	Human Resource Development (HRD)									
	HRD for Supervisors & Entrepreneurs	Rs. 20.00 lakh / unit	100% of the cost in first year. In subsequent years, cost of infrastructure not to be claimed.	1.0	20.0	18.0	2.0			
	HRD for Gardeners	Rs. 15.00 lakh / unit	100% of the cost.	1.0	15.0	13.5	1.5			Skilling of 253 gardeners @ Rs. 16420 per gardner
			Training of farmers							
	Within the State	Rs. 1000/day per farmer including transport	100% of the cost.	634.0	6.3	5.7	0.6	200.0	2.0	
	Outside the state	Project based as per actual.	100% of the cost.	500.0	10.0	9.0	1.0	250.0	5.0	
			(e) Exposure visit of farmers							
	Outside the State	Project based as per actual.	100% of the cost.	372.0	7.44	6.7	0.7	125.0	2.5	
	Outside India	Rs. 4.00 lakh / participant	Project Based. 100% of air/rail travel cost.	2.0	8.0	7.2	0.8	2.0	8.0	
			Training / study tour of technical staff/ field functionaries							
	Within the State	Rs. 300/day per participant plus TA/DA, as admissible	100% of the cost.	250.0	5.0	4.5	0.5	150.0	3.0	
	Study tour to progressive States/ units (group of minimum 5 participants)	Rs. 800/day per participant plus TA/DA, as admissible	100% of the cost.	200.0	6.0	5.4	0.6	100.0	3.0	
	Outside India	Rs. 6.00 lakh / participant	100% of the cost on actual basis.	2.0	12.0	10.8	1.2	2.0	12.0	
	Sub-total			1962.0	89.8	80.8	9.0	829.0	35.5	

Subtotal

INTEGRATED POST HARVEST MANAGEMENT										
11	Pack house / On farm collection & storage unit of 9tkx6kl	Rs. 4.00 lakh/unit with size of 9tkx6kl	50% of the capital cost							
	Refer vans/ containers (general areas)									
	a) General Area	Rs. 26.00 lakh for 9 MT (NHM & HMINEH), and prorata basis for lesser capacity, but not below 4 MT.	Credit linked back-ended subsidy @ 35% of the cost of project in general areas and 50% of cost in case of Hilly & Scheduled areas, per beneficiary.	2.0	400.0	360.0	0.0	0.0	40.0	25.0
	b) Hilly Area	Rs. 26.00 lakh for 9 MT (NHM & HMINEH), and prorata basis for lesser capacity, but not below 4 MT.	Credit linked back-ended subsidy @ 35% of the cost of project in general areas and 50% of cost in case of Hilly & Scheduled areas, per beneficiary.	2.0	23.1	20.8	0.0	2.3		
	Ripening chamber project in general areas	Rs. 1.00 lakh/MT.			0.0	0.0	0.0	0.0		
	Ripening chamber project in Hilly areas	Rs. 1.00 lakh/MT.			0.0	0.0	0.0	0.0		
	Evaporative / low energy cool chamber (8 MT)	Rs. 5.00 lakh/unit	50% of the total cost	50.0	125.0	112.5	0.0	12.5	10.0	25.0
	Primary/ Mobile / Minimal processing unit					0.0	0.0	0.0		
	a) General Area	Rs. 25.00 lakh/unit	Credit linked back-ended subsidy @ 40% of the capital cost of project in general areas and 55% in case of Hilly & Scheduled areas, per beneficiary.			0.0	0.0	0.0		
	b) Hilly Area	Rs. 25.00 lakh/unit	Credit linked back-ended subsidy @ 40% of the capital cost of project in general areas and 55% in case of Hilly & Scheduled areas, per beneficiary.	8.0	110.0	99.0		11.0	10.0	137.5
	Preservation unit (low cost) unit and Rs.1.00lakh/unit for up-gradation	Rs.2.00 lakh/unit for new unit and Rs.1.00lakh/unit for up-gradation	50% of the total cost	109.0	109.0	98.1		10.9	10.0	10.0
	New unit	Rs.2.00 lakh/unit for new unit			0.0	0.0		0.0		
	Upgraded unit	Rs.1.00lakh/unit for up-gradation			0.0	0.0		0.0		
	Low cost onion storage structure (25 MT)	Rs. 1.75 lakh/unit	50% of the total cost			0.0		0.0		
	Pusa Zero energy cool chamber (100 kg)	Rs. 4000 per unit	50% of the total cost	100.0	2.0	1.8		0.2		
	Sub-total			469.0	769.1	692.2		76.9	55.0	222.5
12	ESTABLISHMENT OF MARKETING INFRASTRUCTURE FOR HORTICULTURAL PRODUCE									
	Rural Markets/ Apni mandies/Direct markets	Rs. 25.00 lakh	Credit linked back-ended subsidy @ 40% of the capital cost of project in general areas and 55% in case of Hilly & Scheduled areas, per beneficiary.			0.0		0.0		
	a) General Area	Rs. 25.00 lakh	Credit linked back-ended subsidy @ 40% of the capital cost of project in general areas and 55% in case of Hilly & Scheduled areas, per beneficiary.		0.0	0.0		0.0		
	b) Hilly Area	Rs. 25.00 lakh	Credit linked back-ended subsidy @ 40% of the capital cost of project in general areas and 55% in case of Hilly & Scheduled areas, per beneficiary.	11.0	151.3	136.1		15.1	6.0	82.5
	Retail Markets/ outlets (environmentally controlled)					0.0		0.0		
	a) General Area	Rs. 15.00 lakh/unit	Credit linked back-ended subsidy @ 35% of the capital cost of project in general areas and 50% in case of Hilly & Scheduled areas, per beneficiary.		0.0	0.0		0.0		

cash flow

b) Hilly Area	Rs. 15.00 lakh /unit	Credit linked back-ended subsidy @ 35% of the capital cost of project in general areas and 50% in case of Hilly & Scheduled areas, per beneficiary.																					
Static/Mobile Vending Cart/ Platform with cool chamber.	Rs. 30,000/ unit	50% of total cost.																					
Sub-total																							
SPECIAL INTERVENTIONS																							
Innovative interventions not covered under any GOI schemes	10% of outlay	50% of cost, based on project proposal.																					
Tackling of emergent /unforeseen requirements of SHMs	Rs.20,00 lakh	50% of cost, based on project proposal.																					
Sub-total																							
Mission Management																							
State & Districts Mission Offices and implementing agencies for administrative expenses, project, preparation, computerization, contingency etc.	5% of total annual expenditure on the basis of appraised needs to State Horticulture Mission (SHM) / implementing Agencies	100% assistance.																					
Institutional Strengthening, hire/purchase of vehicles, hardware/software	Project based	100% assistance.																					
Seminars, conferences, workshops, exhibitions, Kisan International level	Rs. 7.50 lakh per event.	100% of cost per event of 4 days, on pro rata basis.																					
National level	Rs. 5.00 lakh per event.	100% of cost per event of two days.																					
State level	Rs. 3.00 lakh /event	100% assistance subject to a maximum of Rs.3.00 lakh per event of two days.																					
District level	Rs. 2.00 lakh /event	100% assistance subject to a maximum of Rs.2.00 lakh per event of two days.																					
Information dissemination through publicity, printed literature etc and local advertisements	Rs. 0.40 lakh/ block	100% of cost.																					
Development of technology packages in electronic form to be shared through IT network	Rs. 1.00 lakh/ district	100% of Cost																					
Technical Support Group (TSG) at State Level for hiring experts/staff, studies, monitoring & concurrent evaluation/evaluation, mass media, publicity, video conference etc.	Project based, subject to a ceiling of Rs. 50. 00 lakh per annum/state	100% of cost																					
Sub-total																							
Grand Total																							

Sub-totals