

Through Email

F. No. 33-9/2016-MIDH (AAP)
Government of India
Ministry of Agriculture & Farmers Welfare
Department of Agriculture, Cooperation & Farmers Welfare
(Horticulture Division)

Room No.-434
Krishi Bhawan, New Delhi-1
Dated: 16th January, 2017

To
Director of Horticulture & Mission Director
Government of Gujarat, Directorate of Horticulture
1st Floor, Krishi Bhawan, Sector- 10A
Gandhi Nagar – 382010.

Subject: Proposal for inter-component changes of the targets under approved components for Gujarat under MIDH for the year 2016-17- reg.

Sir,

I am directed to refer to your letter dated 19.11.2016 on the subject mentioned above and to convey the approval of competent authority for inter-component changes in physical and financial targets in Annual Action Plan (AAP) 2016-17 as under:

Rs in Lakhs

S. No.	Component	Unit	Phy Target		Financial Outlay		% of total outlay
			Old	New	Old	New	
1	Nursery and planting Materials	No.	8	8	325.0	325.0	2.7
2	Establishment of new gardens	Ha.	7576	8097	1772.0	1867.7	15.7
3	Maintenance 1 & 2 Year	Ha.	4988	4988	299.3	299.3	2.5
4	Rejuvenation/ replanting	Ha.	1000	450	200.0	90.0	0.8
5	Promotion of IPM/INM	Ha.	5585	5585	157.0	157.0	1.3
6	Adoption of Organic Farming	Ha.	8	8	4.0	4.0	0.0
7	FLD+ PFDC+GAP	No.	1	1	25.0	10.0	0.1
8	Post Harvest Management	No.	203	311	5824.0	7153.7	60.1
9	Markets	No.	90	52	556.3	316.3	2.7
10	Creation of Water resources	No.	10	10	7.5	7.5	0.1
11	Protected cultivation	Ha.	1103	1053	1768.9	852.2	7.2
12	Horticulture Mechanization	No.	460	345	365.0	231.5	1.9
13	Beekeeping	No.	16161	16161	144.8	144.8	1.2
14	Human Resource Dev (HRD)	No.	10505	10505	94.3	94.3	0.8
15	CoE for Horticulture	No.	2	2	150.0	150.0	1.3
16	Awareness, Survey etc.		47	37	76.0	116.0	1.0
17	Mission Management		0	0	50.0	50.0	0.4
18	Institutional Strengthening		0	0	30.0	29.7	0.2
19	TSG at State Level		0	0	50.0	0.0	0.0
20	Total		47746	47612	11899.0	11899.0	100.0
21	Committed spillover		877.0	877.0	1500.1	1500.1	
	Total				1500.1	1500.1	
	G. Total				13399.1	13399.1	

Note: No CoE proposed

- There is no change in the financial outlay.
- It is requested that the revised AAP may be implemented as per the provisions and norms of the NHM scheme. Revised AAP 2016-17 as enclosed is being uploaded on the NHM website.

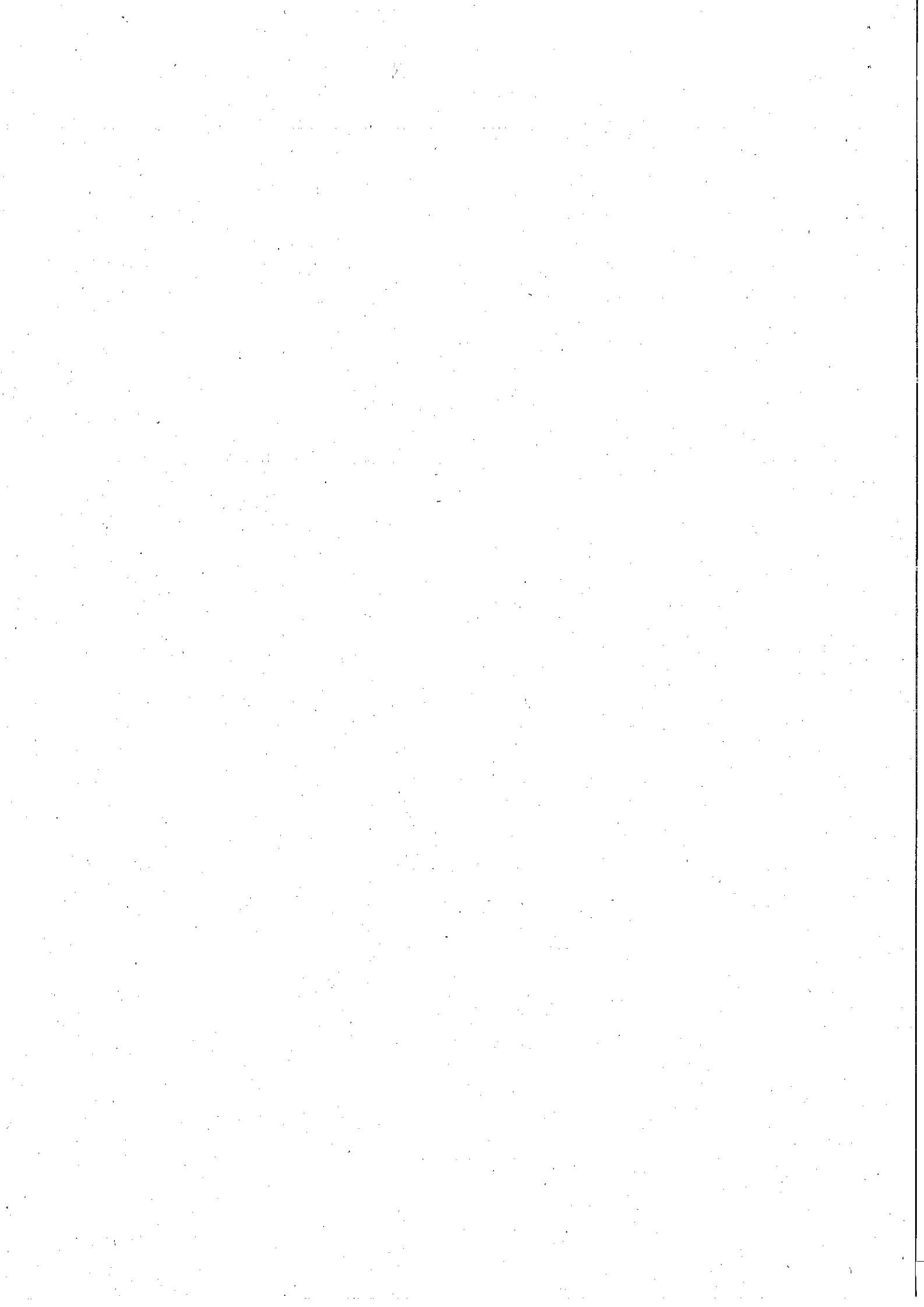
Yours faithfully

(M.K. Mishra)

Under Secretary (MIDH)

Ph. No. 011-23074238

Email: mrityunjaya.m@nic.in



Component wise details for Physical Target and Financial outlay approved for implementation of NHM Programmes during 2016-17 in Gujarat

S. No	Activity	Maximum permissible cost	Pattern of Assistance	Phy Target	Financial Outlay	GOI Share 60%	State Share 40%	Spill over		Remarks	
								Phy Target	Fin. Outlay		
1	Plantation Infrastructure and Development	3	4			7	8				
1	Production of planting material Public Sector										
	Small Nursery (1 ha)										
	b) Private Sector	Rs. 15 lakh/one ha unit	100% to public sector and in case of private sector, credit linked back-ended subsidy of cost, subject to a maximum of Rs. 7.50 lakh/ha, as project based activity. Each nursery will produce a minimum of 25,000 numbers of mandated perennial, vegetatively propagated fruit plants/trees species/plantation crops per year, aromatic plants, duly certified for its quality.	2	15.00	9.00	6.00			0.00	do
	Upgrading nursery infrastructure to meet accreditation norms (4 ha)										
	a) Public Sector	Up to Rs. 10.00 lakh/nursery of 4 ha, on prorata basis	100% of Public Sector			0.00	0.00			0.00	do
	b) Private sector	Up to Rs. 10.00 lakh/nursery of 4 ha, on prorata basis	50% of cost to Private sector subject to a maximum of Rs. 5.00 lakh/nursery.	2	10.00	6.00	4.00			0.00	
	Strengthening of existing Tissue Culture (TC) units										
	a) Public Sector	Rs. 20.00 lakh	100% of cost to public sector			0.00	0.00			0.00	
	b) Private sector	Rs. 20.00 lakh	50% of cost to private sector			0.00	0.00			0.00	
	Setting up of new TC Units.										
	a) Public Sector	Rs. 250.00 lakh	100% of cost to public sector			0.00	0.00			0.00	Project to be submitted
	b) Private sector	Rs. 250.00 lakh	40% of cost to private sector	2	100.00	60.00	40.00			0.00	Project to be submitted
	Seed infrastructure										
	a) Public sector	Rs. 200.00 lakh	100% of cost			0.00	0.00			0.00	do
	b) Private sector	Rs. 200.00 lakh	50% of cost	2	200.00	120.00	80.00			0.00	
	Sub-total			8.00	325.00	195.00	130.00			0.00	
2	Fruit crops other than cost intensive crops using normal spacing (For a maximum area of 4 ha per										
	Fruits - Perennials										
	v) Banana (TC)										
	a) Integrated package with drip irrigation.	Rs. 3.00 lakh/ha	Maximum of Rs. 1.20 lakh/ha (40% of cost) for meeting the expenditure on planting material and cost of material for drip system, INM/PPM etc., in 2 installments (75:25).	1032	387.00	0.00	0.00			0.00	
	b) Without integration	Rs. 1.25 lakh/ha.	Max. of Rs. 0.50 lakh per ha, (40% of cost) for meeting the expenditure on planting material and cost of INM/PPM in 2 installments (75:25). For (a) and (b) above, in the case of TSP areas, Andaman & Nicobar and Lakshadweep Islands, assistance will be @ 50% of cost in 2 installments (75:25).	1032	387.00	232.20	154.80			0.00	
	Sub total			1032	387.00	232.20	154.80			0.00	
	Maintenance without integration										
	1st Year					0.00	0.00			0.00	
	Sub total maintenance			0		0.00	0.00			0.00	
	vii) Papaya										
	a) Integrated package with drip irrigation.	Rs. 2.00 lakh/ha.	Maximum of Rs. 0.80 lakh/ha (40% of the cost) for meeting expenditure on planting material, drip irrigation and cost of material for INM/PPM, in 2 installments (75:25).			0.00	0.00			0.00	

als wo

b) Without integration	Rs. 60,000/ha	Maximum of Rs. 0.30 lakh/ha (50% of cost) for meeting the expenditure on planting material and cost of INM/IPM in 2 installments (75:25). For (a) and (b) above, in the case of NE and Himalayan States, TSP areas, Andaman & Nicobar and Lakshadweep Islands, assistance will be @ 50% of cost in 2 installments (75:25).	1200.0	270.00	162.00	108.00	550.0	123.75 (1.8m x 1.8m)
	Sub total		1200	270.00	162.00	108.00	550.00	123.75
Mei	Maintenance without integration				0.00	0.00		0.00
1st	Year		0		0.00	0.00		0.00
ix) High density planting (mango, guava, litchi, pomegranate, apple, citrus etc)					0.00	0.00		0.00
a) Integrated package with drip irrigation	Rs. 1.50 lakh/ha	Maximum of Rs. 0.60 lakh per ha. (40% of cost) for meeting the expenditure on planting material, cost of drip system, INM/IPM, canopy management etc., in 3 installments of 60:20:20 subject to survival rate of 75% in 2nd year and 90% in 3 rd year.						
b) Without integration.	Rs. 1.00 lakh/ha.	Maximum of Rs. 0.40 lakh/ha (40% of the cost) for meeting the expenditure on planting material and cost of INM/IPM in 3 installments (60:20:20). For (a) and (b) above, in the case of TSP areas, Andaman & Nicobar and Lakshadweep Islands, assistance will be @ 50% of cost in 3 installments of 60:20:20 subject to survival rate of 75% in 2nd year and 90% in 3rd year.	1788.2	429.17	257.50	171.67	317.0	76.08
	Sub total		1788	429.17	257.50	171.67	317.00	76.08
Mei	Maintenance without integration				0.00	0.00		0.00
1st	Year				0.00	0.00		0.00
2nd	Year				0.00	0.00		0.00
(b) Cuit crops other than cost intensive crops using normal spacing			0.00		0.00	0.00	0	0
a) Integrated package with drip irrigation	Rs. 1.00 lakh/ha	Maximum of Rs. 0.40 lakh/ha. (40% of cost) for meeting the expenditure on planting material, cost of drip system, INM/IPM, canopy management etc in 3 installments of 60:20:20 subject to survival rate of 75% in 2nd year & 90% in 3rd year for perennial crops and for non perennial crops in 2 installments of 75:25			0.00	0.00		0.00
b) Without integration	Rs. 60,000/ha	Maximum of Rs. 0.30 lakh/ha (50% of cost) for meeting the expenditure on planting material and cost of INM/IPM in 3 installments of 60:20:20.			0.00	0.00		0.00
Mei	Year		1111	200.00	120.00	80.00		0.00
	Sub total		1111	200.00	120.00	80.00		0.00
Mei	Maintenance without integration				94.50	63.00		0.00
1st	Year		2625.00	157.50	85.05	56.70		
2nd	Year		2362.50	141.75	85.05	56.70		
	Sub total Maintenance		4987.50	299.25	179.55	119.70		
	Vegetable (for maximum area of 2 ha per beneficiary)							0.00
Hyd	Year		2550	510.00	306.00	204.00		0.00
Sub	total	40% of cost in general areas	2550	510.00	306.00	204.00		0.00
3	Flo wers (For a maximum of 2 ha per beneficiary)							
Cu	ltures							
Sm	all & Marginal Farmers	40% of cost	10.0	2.50	1.50	1.00		0.00
Oth	er farmers	25% of the cost			0.00	0.00		0.00
Bri	llious flowers							0.00

Subtotal

Cent. Excellence for PHM in Date		Rs. 1000.00 lakh/ centre	100% of cost to public sector. This can be established through bi-lateral co-operation also.															
Total CoE				1	75.00	45.00	30.00											
8		Pollination support through beekeeping		2	150.00	90.00	60.00											
	Production of nucleus stock (Public Sector)	Rs. 20.00 lakh	100% of the cost.			0.00	0.00											
	Production of bee colonies by bee breeder	Rs. 10.00 lakh	40% of cost for producing min. of 2000 colonies/year	1	4.00	2.40	1.60											
	Honey bee colony	Rs. 2000/colony of 8 frames	40% of cost limited to 50 colonies / beneficiary.	8000	64.00	38.40	25.60											
	Hives	Rs 2000/ per hive.	40% of cost limited to 50 colonies / beneficiary.	8000	64.00	38.40	25.60											
	Equipment including honey extractor (4 frames, food grade container (30 kg), net, etc.	Rs. 20,000/set	40% of the cost limited to one set per beneficiary.	160	12.80	7.68	5.12											
	Sub-total			16161	144.80	86.88	57.92											
9		Horticulture Mechanization																
	i) Power Tiller																	
	a) Power tiller (below 8 BHP) (SC, ST, Small & Marginal farmers)	1.00 lakh per unit	Subject to a maximum of Rs.0.40 lakh/unit for general category farmers, and in the case if SC, ST, Small & Marginal farmers, women farmers and beneficiaries in NE states, subject of a maximum of Rs. 0.50 lakh/unit			0.00	0.00											
	b) Power tiller (8 BHP & above)	1.50 lakh per unit	Subject to a maximum of Rs.0.60 lakh/unit for general category farmers, and in the case if SC, ST, Small & Marginal farmers, women farmers and beneficiaries in NE states, subject of a maximum of Rs. 0.75 lakh/unit	0	0.00	0.00	0.00											
	b) Power tiller (8 BHP & above) (SC, ST, Small & Marginal farmers)	1.50 lakh per unit	Subject to a maximum of Rs.0.60 lakh/unit for general category farmers, and in the case if SC, ST, Small & Marginal farmers, women farmers and beneficiaries in NE states, subject of a maximum of Rs. 0.75 lakh/unit	300	225.00	135.00	90.00											
	(iii) Tractor/Power tiller (below 20 BHP) driven equipments	0.30 lakh per unit	Subject to a maximum of Rs.0.12 lakh/unit for general category farmers, and in the case if SC, ST, Small & Marginal farmers, women farmers and beneficiaries in NE states, subject of a maximum of Rs. 0.15 lakh/unit			0.00	0.00											
	1) General	-do-				0.00	0.00											
	2) SF/MF	-do-				0.00	0.00											
	3) SC & ST	-do-				0.00	0.00											
	b) Sowing, planting reaping and digging equipments	0.30 lakh per unit	Subject to a maximum of Rs.0.12 lakh/unit for general category farmers, and in the case if SC, ST, Small & Marginal farmers, women farmers and beneficiaries in NE states, subject of a maximum of Rs. 0.15 lakh/unit			0.00	0.00											
	c) Plastic mulch laying machine	0.70 lakh per unit	Subject to a maximum of Rs.0.28 lakh/unit for general category farmers, and in the case if SC, ST, Small & Marginal farmers, women farmers and beneficiaries in NE states, subject of a maximum of Rs. 0.35 lakh/unit			0.00	0.00											
	1) General	-do-				0.00	0.00											
	2) SF/MF	-do-				0.00	0.00											
	3) SC & ST	-do-				0.00	0.00											
	(iv) Self-propelled Horticulture Machinery	2.50 lakh per unit	Subject to a maximum of Rs. 1.00 lakh/unit for general category farmers, and in the case if SC, ST, Small & Marginal farmers, women farmers and beneficiaries in NE states, subject of a maximum of Rs. 1.25 lakh/unit			0.00	0.00											

adus lno

iv) Self-propelled Horticulture Machinery (SC, ST, Small & Marginal farmers)	2.50 lakh per unit	Subject to a maximum of Rs. 1.00 lakh/unit for general category farmers, and in the case of SC, ST, Small & Marginal farmers, women farmers and beneficiaries in NE states, subject of a maximum of Rs. 1.25 lakh/unit.	5	6.25	3.75	2.50	0.00
(v) Equipment							0.00
Motor Sprayer (Knapsack/foot operated sprayer)							0.00
a) General	0.012 lakh per unit	Subject to a maximum of Rs.0.005 lakh/unit for general category farmers, and in the case of SC, ST, Small & Marginal farmers, women farmers and beneficiaries in NE states, subject of a maximum of Rs.0.006 lakh/unit.		0.00	0.00	0.00	0.00
b) SC/ST etc	0.012 lakh per unit	Subject to a maximum of Rs.0.005 lakh/unit for general category farmers, and in the case of SC, ST, Small & Marginal farmers, women farmers and beneficiaries in NE states, subject of a maximum of Rs.0.006 lakh/unit.	40	0.24	0.14	0.10	
Power Knapsack sprayer/power operated Taiwan sprayer (8-12 lts Capacity)							
a) General	0.062 lakh per unit	Subject to a maximum of Rs. 0.025 lakh/unit for general category farmers, and in the case of SC, ST, Small & Marginal farmers, women farmers and beneficiaries in NE states, subject of a maximum of Rs.0.031 lakh/unit.		0.00	0.00	0.00	
b) SC/ST etc	0.062 lakh per unit	Subject to a maximum of Rs. 0.025 lakh/unit for general category farmers, and in the case of SC, ST, Small & Marginal farmers, women farmers and beneficiaries in NE states, subject of a maximum of Rs.0.031 lakh/unit.		0.00	0.00	0.00	0.00
Power Knapsack sprayer/power operated Taiwan sprayer (12-16 lts Capacity)							
a) General	0.062 lakh per unit	Subject to a maximum of Rs.0.03 lakh/unit for general category farmers, and in the case of SC, ST, Small & Marginal farmers, women farmers and beneficiaries in NE states, subject of a maximum of Rs.0.038 lakh/unit.			0.00	0.00	0.00
b) SC/ST etc	0.062 lakh per unit	Subject to a maximum of Rs.0.03 lakh/unit for general category farmers, and in the case of SC, ST, Small & Marginal farmers, women farmers and beneficiaries in NE states, subject of a maximum of Rs.0.038 lakh/unit.			0.00	0.00	0.00
Power Knapsack sprayer/power operated Taiwan sprayer (16 lts Capacity)							
a) General	0.20 lakh per unit	Subject to a maximum of Rs.0.08 lakh/unit for general category farmers, and in the case of SC, ST, Small & Marginal farmers, women farmers and beneficiaries in NE states, subject of a maximum of Rs.0.10 lakh/unit.		0.00	0.00	0.00	0.00
b) SC/ST etc	0.20 lakh per unit	Subject to a maximum of Rs.0.08 lakh/unit for general category farmers, and in the case of SC, ST, Small & Marginal farmers, women farmers and beneficiaries in NE states, subject of a maximum of Rs.0.10 lakh/unit.			0.00	0.00	0.00
Trip Mounted /operated sprayer (Bo.w.20HP)							
a) General	0.20 lakh per unit	Subject to a maximum of Rs. 0.08 lakh/unit for general category farmers, and in the case of SC, ST, Small & Marginal farmers, women farmers and beneficiaries in NE states, subject of a maximum of Rs.0.10 lakh/unit.			0.00	0.00	0.00

subscribed

a) General Area	Rs. 50.00 lakh per unit with size of 9Mx18M	Credit linked back-ended subsidy @ 35% of the cost of project in general areas and 50% of cost in case Hilly & Scheduled areas, per beneficiary.	0	0.00	0.00	0.00	0.00	0.00	Project approve as on 16.3.2015
b) Hilly Area	Rs. 50.00 lakh per unit with size of 9Mx18M	Credit linked back-ended subsidy @ 35% of the cost of project in general areas and 50% of cost in case Hilly & Scheduled areas, per beneficiary.		0.00	0.00	0.00	0.00		
Prn. cooling unit	Rs. 25.00 lakh / unit with capacity of 6MT.	Credit linked back-ended subsidy @ 35% of the cost of project in general areas and 50% of cost in case Hilly & Scheduled areas, per beneficiary.	5	43.75	26.25	17.50			
Prn. cooling unit (Hilly areas)	Rs. 25.00 lakh / unit with capacity of 6MT.	Credit linked back-ended subsidy @ 35% of the cost of project in general areas and 50% of cost in case Hilly & Scheduled areas, per beneficiary.		0.00	0.00	0.00			
Coll. room (staging)	Rs. 15.00 lakh/ unit of 30 MT capacity	Credit linked back-ended subsidy @ 35% of the cost of project in general areas and 50% of cost in case Hilly & Scheduled areas, per beneficiary.	5	26.25	15.75	10.50			
Cold Storage (Construction, Expansion and Modernisation)									
ii) Cold storage units Type 1 - basic mezzanine structure with large chamber (of >250 MT) type with single temperature									
a) General Area	Rs. 8,000/MT, (max 5,000 MT capacity)	Credit linked back-ended subsidy @ 35% of the cost of project in general areas and 50% of cost in case Hilly & Scheduled areas, per beneficiary.	39	5373.59	3224.15	2149.44	10	1300.28	
b) Hilly Area	Rs. 8,000/MT, (max 5,000 MT capacity)	Credit linked back-ended subsidy @ 35% of the cost of project in general areas and 50% of cost in case Hilly & Scheduled areas, per beneficiary.		0.00	0.00	0.00			
ii) Cold Storage Unit Type 2 - PEB structure for multiple temperature and product use, more than 6 chambers (of < 250									
a) General Area	Rs. 10,000/MT, (max 5,000 MT capacity)	Credit linked back-ended subsidy @ 35% of the cost of project in general areas and 50% of cost in case Hilly & Scheduled areas, per beneficiary.	2	100.00	60.00	40.00		0.00	Project to be submitted
b) Hilly Area	Rs. 10,000/MT, (max 5,000 MT capacity)	Credit linked back-ended subsidy @ 35% of the cost of project in general areas and 50% of cost in case Hilly & Scheduled areas, per beneficiary.		0.00	0.00	0.00			Project to be submitted
iii) Cold Storage Units Type 2 with add on technology for Controlled Atmosphere									
a) General Area	Additional Rs. 10,000/MT for add on components of controlled atmosphere technology. Details are as per Appendix - II	Credit linked back-ended subsidy @ 35% of the cost of project in general areas and 50% of cost in case Hilly & Scheduled areas, per beneficiary.	2	605.88	363.53	242.35		0.00	
b) Hilly Area	Additional Rs. 10,000/MT for add on components of controlled atmosphere technology. Details are as per Appendix - II	Credit linked back-ended subsidy @ 35% of the cost of project in general areas and 50% of cost in case Hilly & Scheduled areas, per beneficiary.		0.00	0.00	0.00			
Technology induction and modernisation of cold-chain									
a) General Area	Max Rs. 250.00 lakh for modernization of PLC equipment, packaging lines, dock levelers, advanced graders, alternate technologies, stacking systems, modernization of insulation and refrigeration, etc. Details are in Appendix - II	Credit linked back-ended subsidy @ 35% of the cost of project in general areas and 50% of cost in case Hilly & Scheduled areas, per beneficiary.	8	50.00	30.00	20.00		0.00	Project to be submitted
Ref. - vans/ containers (general areas)									
a) General Area	Rs. 25.00 lakh for 9 MT (NHM & HMNEH), and prorata basis for lesser capacity, but not below 4 MT.	Credit linked back-ended subsidy @ 35% of the cost of project in general areas and 50% of cost in case of Hilly & Scheduled areas, per beneficiary.	8	48.00	28.80	19.20			Project to be submitted

mskshw

Mission Management									
13	State & District Mission Offices and implementing agencies for administrative expenses, project, preparation, computerization, contingency etc.	5% of total annual expenditure on the basis of appraised needs to State Horticulture Mission (SHM) / Implementing Agencies	100% assistance.		50.00	30.00	20.00		
	Additional Strengthening, hire purchase of vehicles, hardware/software	Project based	100% assistance.		29.74	17.84	11.90		0.00
	Seminars, conferences, workshops, exhibitions, Kisan Melas, horticulture shows, international level	Rs. 7.50 lakh per event.	100% of cost per event of 4 days, on pro rata basis.			0.00	0.00		0.00
	National level	Rs. 5.00 lakh per event.	100% of cost per event of two days.	1	5.00	3.00	2.00		0.00
	State level	Rs. 3.00 lakh /event	100% assistance subject to a maximum of Rs.3.00 lakh per event of two days.	5	15.00	9.00	6.00		0.00
	District level	Rs. 2.00 lakh /event	100% assistance subject to a maximum of Rs.2.00 lakh per event of two days.	21	42.00	25.20	16.80		0.00
	Information dissemination through publicity, printed literature etc and local advisory programmes	Rs. 0.40 lakh/ block	100% of cost.	10	4.00	2.40	1.60		
	Development of technology packages in electronic form to be shared through IT network	Rs. 1.00 lakh/ district	100% of Cost	0	0.00	0.00	0.00		
	Technical Support Group (TSG) at State Level for hiring experts/staff, studies, monitoring & concurrent evaluation/evaluation, mass media, audio, video, conference etc.	Project based, subject to a ceiling of Rs. 50.00 lakh per annum/state	100% of cost		50.00	30.00	20.00		0.00
	Priority of Farmer Producers Organization/ FPO/FIG Farmer Interest Groups of 15-20 farmers/20 ha, Growers Associations and tie up with Financial Institutions and Aggregators.	As per norms issued by SFAC.	As per norms issued by SFAC from time to time.			0.00	0.00		
	Baseline survey and Strengthening horticultural statistical data base	Rs. 100.00 lakh for large states, Rs. 50.00 lakh for small states and Rs. 25.00 lakh for very small states/ UTs.	100% of cost as one time grant on survey related activities.			0.00	0.00		
	Sub total				195.74	117.44	78.30		0.00
	Grand Total			47575.22	11899.00	7139.40	4759.60	877.00	1500.11

only two