

F. No. 33-8/2017-MIDH (AAP)
Government of India
Ministry of Agriculture & Farmers Welfare
Department of Agriculture & Cooperation
(Horticulture Division)

Room No.- 434-A
Krishi Bhawan, New Delhi
Dated: 20th June, 2017

To

The Mission Director
State Horticulture Mission,
Govt. of Bihar, Vikas Bhawan, Bailey Road
Patna – 800015,
Fax: 0612-2215373

Subject: Implementation of National Horticulture Mission (NHM) under Mission for Integrated Development of Horticulture (MIDH) programme- Approval of Annual Action Plan (AAP) 2017-18-regarding.

Sir,

I am directed to convey approval for implementation of National Horticulture Mission (NHM) programme under MIDH in the State of Bihar during 2017-18 with total outlay of **Rs. 5110.6 lakh** (including Rs. 725.6 Lakh Spill over activity/ unspent balance) as per following details:

	(Rs. In lakh)		
	GOI Share (60%)	State Share (40%)	Total
Total Outlay-2017-18	2631.0	1754.0	4385.0
Spill over Activity/ Unspent Balance	435.4	290.2	725.6
Total	3066.4	2044.6	5110.6

2. The component wise details of Annual Action Plan, 2017-18 indicating physical targets and financial outlay are enclosed. Details are also available on NHM website. The approval is subject to the following terms and conditions:-

- I. The State Horticulture Mission (SHM) may start implementation of the programme for activities other than project-based and submit the proposals for project based activities for approval of Empowered Committee of MIDH. For the project based activities, for which powers have been delegated to State Level Executive Committee (SLEC), the minutes of SLEC meeting wherein projects are approved may be furnished to this Department along with details of beneficiaries, location, bank loan, etc. to facilitate release of funds.
- II. Expenditure on approved activities shall be in conformity with the norms laid down in the operational guidelines of the scheme.

Saravendra Singh
20/6/17

- III. SHM should make advance arrangement for procurement of planting material from accredited nurseries/certified planting material/certified seeds for ensuing season. SHM should have a mechanism in place for the proper certification and distribution of planting material/seeds. Sourcing of planting material/seeds from ICAR institutes, SAUs, KVKs and Government Department is to be given priority over other sources. **Area Expansion shall be restricted to availability of planting material from accredited nurseries/certified Planting Material.** In case of Truthfully Labelled (TL) seeds, it should be procured only from public sector agencies. Merely procurement of the planting material/seed through the public sector agencies like Seed Corporation, Agro Corporation and other agencies do not ensure the quality of planting material/seed as they do not produce the same. SHM should ensure that these public sector agencies procure certified material and in case certified material is not available, seedlings/ TL seeds are to be procured only from ICAR institutes, SAUs, KVKs and Government Departments.
- IV. More focus is to be given on enhancing productivity of horticulture crops for the holistic development supported with infrastructure for Pre- and Post- Harvest Management and Marketing.
- V. To improve the productivity of existing old and senile orchards, there is need to identify gaps and revise the existing strategy for achieving the desired results. A proper mechanism needs to be devised to disseminate technology and train farmers on rejuvenation technology. Exposure visit of farmers should be organized to those institutes/places where rejuvenation technology has been developed and also adopted by the farmers. Chief Consultants under NHM will visit the State and discuss this matter with the SHM.
- VI. The programme for protected cultivation and lining of Community tanks/ponds should be taken up in close coordination with the Precision Farming Development Centre (PFDC) in the State.
- VII. Protected Cultivation of vegetables should be promoted under NHM in clusters around major cities/metros. These clusters may be provided with other infrastructural facilities like pre-cooling units, cold storages, reefer vans, vending carts etc. and marketing arrangements may be tied up by linking with cooperatives/private retail chains like SAFAL, farmer markets.
- VIII. Organic farming should be linked to certification. No separate funds will be provided for adoption of organic farming alone. Arrangements should also be made by the SHM or concerned agency for the marketing of organic produce. Selection of Service Provider Agencies is to be done by adoption of competitive bidding.
- IX. IPM measures should be need based and are to be taken after clearly identifying the problem of pests/disease in the clusters. INM measures are to be adopted in the clusters to correct soil deficiency and reduce excessive dependence on chemical fertilizers.
- X. The creation of water harvesting structure should be implemented in conjunction with Mahatma Gandhi National Rural Employment Guarantee Scheme (MNREGA) wherever feasible and should be compulsorily linked with the new area expansion and micro-irrigation programmes.
- XI. For implementation of horticulture mechanization, PHM, marketing and mobile/primary processing activities, SHM should make efforts to organize self-help groups, farmers' interest groups, growers association at local level and also involve Panchayats, Cooperatives, Producers Company etc. In this regard, SHM is to play pro-active role and should appoint one senior level officer as nodal officer and make him responsible for these components.

Saravendran Singh
20/6/17

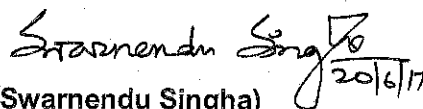
- XII. Efforts should also be made for the buyback arrangements of the horticulture produce.
- XIII. SHM should involve State Agricultural University and ICAR Institutes in the State for the extension activities under NHM.
- XIV. SHM shall document the Annual Report and success stories and furnish them to DAC&FW.
- XV. The SHM should also conduct Impact Evaluation Study through independent organization of repute in the State.
- XVI. While implementing the NHM programme, convergence and synergy should be ensured with the other schemes like Micro Irrigation, RKVY, PKVY, MNREGS, National Mission on Medicinal Plants, AEZs of APEDA, Tribal Sub Plan, Mega Food Parks of Ministry of Food Processing Industries, Watershed Development Programmes, BRGF and Schemes of the State Government.
- XVII. The Audited Statement of Accounts (ASA) for 2015-16 and Utilization Certificate for 2016-17, if not submitted so far, should be furnished to facilitate release of funds during 2017-18.
- XVIII. According to the provisions of the Fiscal Responsibilities and Budget Management (FRBM) Act, 2003 and Rules thereof, regular feedback from the implementing agencies on the physical and financial progress of the activities is necessary for periodical review.
- XIX. The monthly physical and financial progress may be posted on the website www.nhm.nic.in by the 5th of every month and certified hard copy be furnished to this Department by the 10th of every month following the month under report.. Status of project based proposals need also to be uploaded on NHM website.
- XX. It may be noted that the release of funds would be subject to the furnishing of requisite information as mentioned above. In addition to that, a mid-term review would be undertaken at appropriate time.

3. The SHM is also requested to implement the scheme keeping in view the broad discussions held during review meeting held on 2nd - 3rd May, 2017.

4. This issues with the approval of JS (MIDH)

Encl: as above

Yours faithfully,

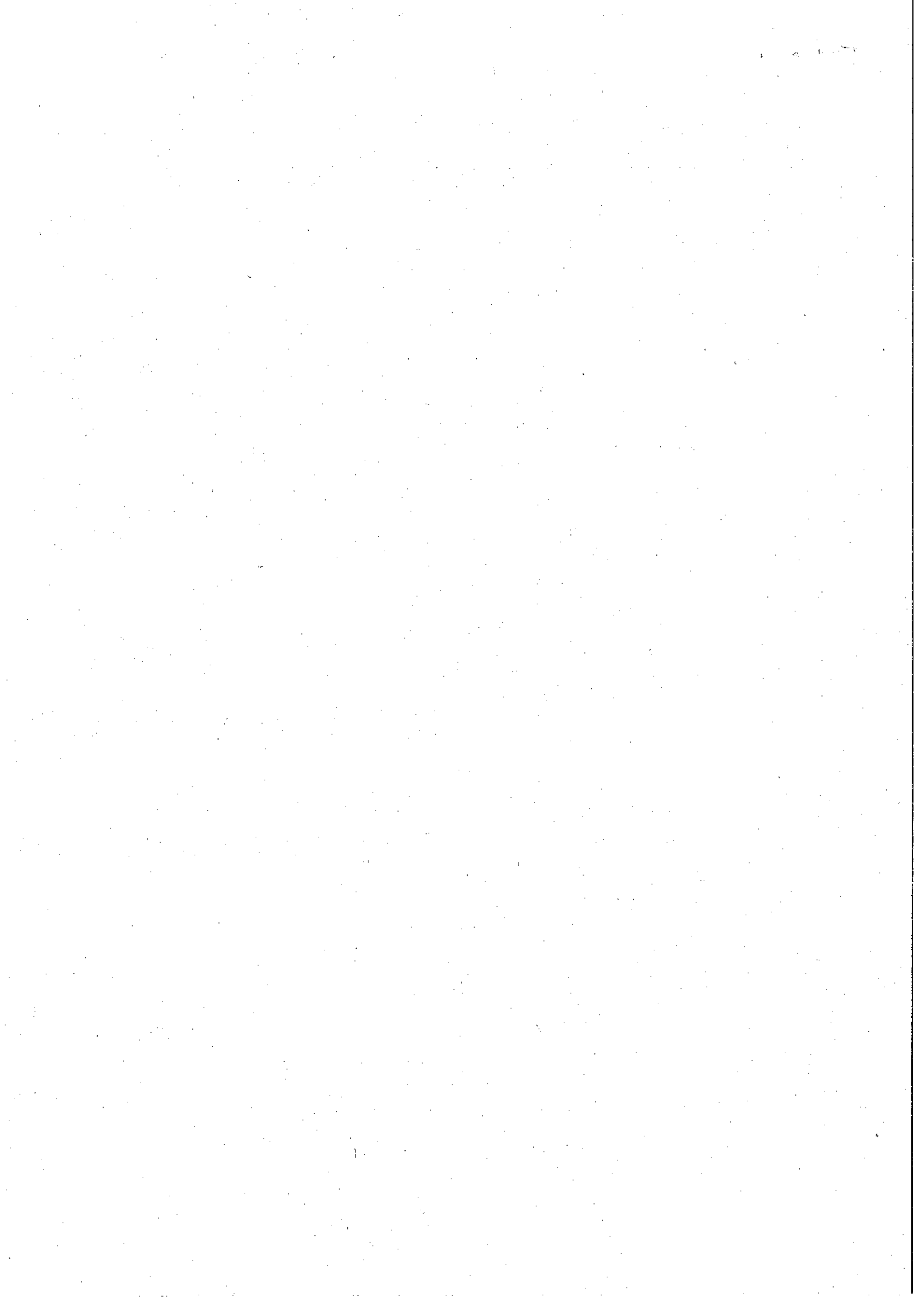


(Swarnendu Singha)
Section Officer (MIDH)
(O) 011-2338 8474

E-mail id: swarnendusingha@gmail.com

Copy to:

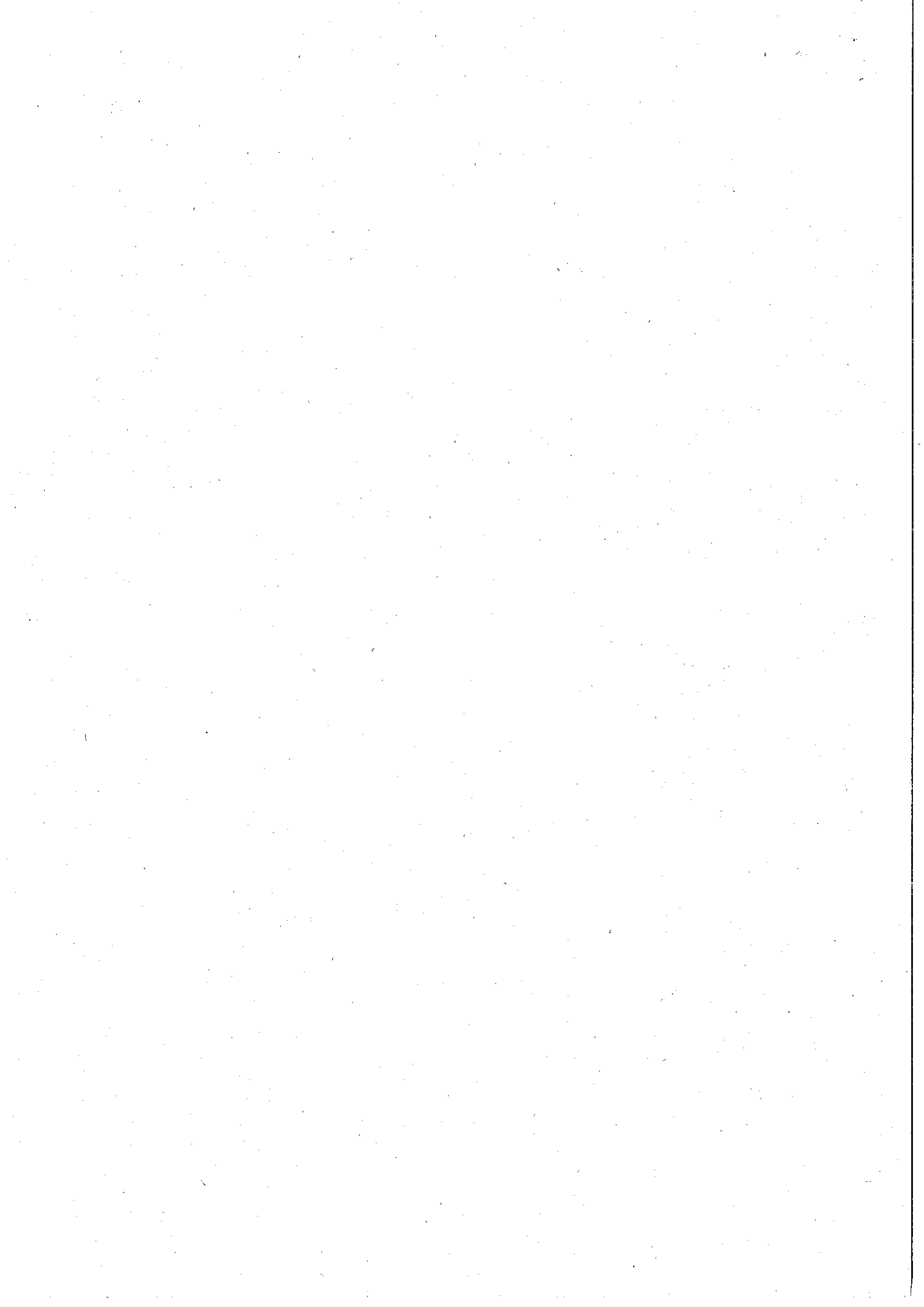
1 Tech. Dir.(NIC) for uploading



Summary of Action Plan 2017-18 Bihar

S.No	Component	Unit	2017-18					Spill Over	
			Phy Target	Fin. Outlay	Gol Share	State Share	% of Outlay	Phy Target	Fin. Outlay
1	Nursery and planting Materials	No.	1.0	236.4	141.8	94.6	5.4	1.0	250.0
2	Establishment of new gardens	Ha.	3516.7	904.0	542.4	361.6	20.6	300.0	150.0
3	Maintenance 1 & 2 Year	Ha.	0.0	0.0	0.0	0.0	0.0	0.0	0.0
4	Mushrooms Production		2.0	14.0	8.4	5.6	0.3	3.0	24.0
5	Rejuvenation/ replanting	Ha.	25.0	5.0	3.0	2.0	0.1	0.0	0.0
6	Promotion of IPM/INM	Ha.	5000.0	60.0	36.0	24.0	1.4	0.0	0.0
7	Adoption of Organic Farming	Ha.	0.0	0.0	0.0	0.0	0.0	0.0	0.0
8	FLD+ PFDC+GAP	No.	4.0	75.0	45.0	30.0	1.7	0.0	0.0
9	Post Harvest Management	No.	442.3	1210.5	726.3	484.2	27.6	130.0	141.6
10	Food Processing	No.	0.0	0.0	0.0	0.0	0.0	0.0	0.0
11	Markets	No.	37.0	76.3	45.8	30.5	1.7	0.0	0.0
12	Creation of Water resources	No.	0.0	0.0	0.0	0.0	0.0	0.0	0.0
13	Protected cultivation	Ha.	2017.0	689.4	413.6	275.8	15.7	0.0	0.0
14	Horticulture Mechanization	No.	28.0	23.2	13.9	9.3	0.5	0.0	0.0
15	Beekeeping	No.	22500.0	360.0	216.0	144.0	8.2	20000	160.0
16	Human Resource Development (HRD)	No.	2000.0	76.0	45.6	30.4	1.7	0.0	0.0
17	Centre of Excellence for Horticulture	No.	0.0	0.0	0.0	0.0	0.0	0.0	0.0
18	Special Interventions (including value chain project)	No.	320200.0	340.2	204.1	136.1	7.8	0	0.0
19	Others (Awareness, Survey, TSG etc.)		8.0	104.0	62.4	41.6	2.4	0.0	0.0
20	Mission Management			211.1	126.6	84.4	4.8	0.0	0.0
	Total			4385.0	2631.0	1754.0	100.0		725.6

S. Aramendh Singh
20/6/17



Annual Action Plan of Bihar 2017-18

Action Plan 2017-18										(Rs. in Lakhs)
S. No	Activity	Maximum permissible cost	Pattern of Assistance	AAP 2017-18			Spill Over		Remark	
				Phy Target	Fin. Outlay	GOI Share 60%	State Share 40%	Phy Target		Fin. Outlay
1	2	3	4		6	7	8	6		
Plantation Infrastructure and Development										
Production of planting material Public Sector										
Hi-tech nursery (4ha)										
	b) Private Sector	Rs. 25 lakh/ha unit	100% to public sector limited to Rs 100 lakh/unit and in case of private sector, credit linked back-ended subsidy @ 40% of cost, subject to a maximum of Rs. 40 lakh/unit, for a maximum of 4 ha. as project based activity on prorata basis. Each nursery will produce a minimum of 50,000 numbers per hectare of mandated perennial fruit crops/ tree spices/ aromatic trees/plantation crops per year, duly certified for its quality.	1	25.00	15.00	10.00	0.00	Project to be submitted	
Upgrading nursery Infrastructure to meet accreditation norms (4 ha)										
	a) Public Sector	Up to Rs. 10.00 lakh/nursery of 4 ha, on prorata basis	100% of Public Sector	5	50.00	30.00	20.00	0.00	Minutes of SLEC meeting to be submitted along with details of beneficiaries, location, etc. to be submitted	
	b) Private sector	Up to Rs. 10.00 lakh/nursery of 4 ha, on prorata basis	50% of cost to Private sector subject to a maximum of Rs. 5.00 lakh/nursery.	10	50.00	30.00	20.00	0.00		
Strengthening of existing Tissue Culture (TC) units										
	a) Public Sector	Rs. 20.00 lakh	100% of cost to public sector		0.00	0.00	0.00	0.00		
	b) Private sector	Rs. 20.00 lakh	50% of cost to private sector		0.00	0.00	0.00	0.00		
Setting up of new TC Units.										
	a) Public Sector	Rs. 250.00 lakh	100% of cost to public sector		0.00	0.00	0.00	250.00	Project to be submitted	
	b) Private sector	Rs. 250.00 lakh	40% of cost to private sector	1	100.00	60.00	40.00	0.00	Project to be submitted	
Seed production for vegetables and spices										
Open pollinated crops										
	a) Public Sector	Rs. 35,000/ha	100% of cost, limited to 5 ha. Output target of seed for each crop will be fixed by the individual state.		0.00	0.00	0.00	0.00		

Saranendra Singh
20/06/2017

	b) Private sector	Rs. 35,000/ha	35% in general areas and 50% in NE & Himalayan States, Tribal Sub Plans (TSP) areas, Andaman & Nicobar & Lakshadweep Islands, limited to 5 ha. Output target of seed for each crop will be fixed by the individual state.	50	6.13	3.68	2.45			0.00
	Hybrid seeds									
	b) Private sector	Rs. 1.50 lakh/ha	35% in general areas and 50% in NE & Himalayan States, Tribal Sub Plans (TSP) areas, Andaman & Nicobar & Lakshadweep Islands, limited to 5 ha. Output target of seed for each crop will be fixed by the individual state.	10	5.25	3.15	2.10			0.00
	Sub-total Planting material			77.00	236.38	141.83	94.55	1.00	250.00	
2	Establishment of new gardens / Area Expansion									
	Fruit crops other than cost intensive crops using normal spacing (For a maximum area of 4 ha per beneficiary)									
	Fruits - Perennials									
	(a) Cost intensive crops									
	v) Banana (TC)									
	a) Integrated package with drip irrigation.	Rs. 3.00 lakh/ha	Maximum of Rs. 1.20 lakh/ha (40 % of cost) for meeting the expenditure on planting material and cost of material for drip system, INM/IPM etc., in 2 installments (75:25).		0.00	0.00	0.00			0.00
	b) Without integration	Rs. 1.25 lakh/ha.	Max. of Rs. 0.50 lakh per ha, (40% of cost) for meeting the expenditure on planting material and cost of INM/IPM in 2 installments (75:25). For (a) and (b) above, in the case of TSP areas, Andaman & Nicobar and Lakshadweep Islands, assistance will be @ 50% of cost in 2 installments (75:25).	800	300.00	180.00	120.00	300	150.00 (1.8m x 1.8m)	
	Sub total			800	300.00	180.00	120.00	300	150.00	
	Maintenance without integration									
	1st Year				0.00	0.00	0.00			0.00
	Sub total maintenance			0.00	0.00	0.00	0.00			0.00
	ix) High density planting (mango, guava, litchi, pomegranate, apple, citrus etc).									
	a) Integrated package with drip irrigation	Rs. 1.50 lakh /ha	Maximum of Rs. 0.60 lakh per ha. (40% of cost) for meeting the expenditure on planting material, cost of drip system, INM/IPM, canopy management etc., in 3 installments of 60:20:20 subject to survival rate of 75% in 2nd year and 90% in 3rd year).		0.00	0.00	0.00			0.00

S. Srinivasan Singh 20/6/17 Page 3 of 10

b) Without integration.	Rs. 1.00 lakh/ha.	Maximum of Rs. 0.40 lakh/ha (40% of the cost) for meeting the expenditure on planting material and cost of INM/IPM in 3 installments (60:20:20). For (a) and (b) above, in the case of TSP areas, Andaman & Nicobar and Lakshadweep Islands, assistance will be @ 50% of cost in 3 installments of 60:20:20 subject to survival rate of 75% in 2nd year and 90% in 3rd year	0.00	0.00	0.00	0.00	0.00
(Mango)	-do-	-do-	1667	400.00	240.00	160.00	0.00
Sub total			1667	400.00	240.00	160.00	0.00
Vegetable (For maximum area of 2 ha per beneficiary)							
Hybrid	Rs.50,000/ ha	40% of cost in general areas	500	100.00	60.00	40.00	0.00
Sub-total			500.00	100.00	60.00	40.00	0.00
3	Flowers (For a maximum of 2 ha per beneficiary)						
Bulbous flowers							
Small & Marginal Farmers	Rs. 1.50 lakh/ha	40 % of the cost	50.0	30.00	18.00	12.00	0.00
Other farmers	do	25% of cost		0.00	0.00	0.00	0.00
Loose Flowers							
Small & Marginal Farmers	Rs. 40,000/ha	40% of cost	200.0	32.00	19.20	12.80	0.00
Other farmers	do	25% of cost		0.00	0.00	0.00	0.00
Sub-total flowers			250.0	62.00	37.20	24.80	0.00
4	Spices (For a maximum area of 4 ha per beneficiary)						
Seed spice and Rhizomatic spices	Rs.30,000/ha	Maximum of Rs. 12,000/- per ha. (40% of cost) for meeting the expenditure on planting material and cost of material for INM/IPM etc).	150	18.00	10.80	7.20	0.00
Sub-total spices			150	18.00	10.80	7.20	0.00
Aromatic Plants (For a maximum area of 4 ha per beneficiary)							
(a) Cost intensive aromatic plants	Rs. 1,00,000/ha	40% of cost, subject to a maximum of Rs.40,000/- per ha, for meeting the expenditure on planting material and cost of material for INM/IPM etc.		0.00	0.00	0.00	0.00
(b) Other aromatic plants	Rs. 40,000/ha	40% of cost, subject to a maximum of Rs. 16,000/- per ha, for meeting the expenditure on planting material and cost of material for INM/IPM etc. For (i) and (ii) above, in the case of TSP areas, Andaman & Nicobar and Lakshadweep Islands, assistance will be @ 50% of cost.	150.0	24.00	14.40	9.60	0.00
Sub-total aromatics			150.0	24.00	14.40	9.60	0.00
Grand Total Area Expansion							
			3516.65	904.00	542.40	361.60	150.00
Grand Total Area Expansion maintenance							
			0.00	0.00	0.00	0.00	0.00
Mushrooms							

✓ Statement Sing 2016/17 Page 4 of 10

Production unit												
Public Sector	Rs. 20.00 lakh/ unit	100% of the cost.										
Private Sector	Rs. 20.00 lakh/ unit	40% of cost for meeting the expenditure on infrastructure, as credit linked back ended subsidy.	1.0	8.00	4.80	3.20	2.0	16.00				
Spawn making unit												
Public Sector	Rs. 15 lakh/ unit	100% of the cost.										
Private Sector	Rs. 15 lakh/ unit	40% of cost for meeting the expenditure on infrastructure, as credit linked back ended subsidy.	1.0	6.00	3.60	2.40		0.00				
Compost making unit												
Public Sector	Rs. 20.00 lakh/ unit	100% of the cost.										
Private Sector	Rs. 20.00 lakh/ unit	40% of cost for meeting the expenditure on infrastructure, as credit linked back ended subsidy.		0.00	0.00	0.00	1.0	8.00				
Sub-total mushroom												
Rejuvenation/ replacement of sterile plantation including Canopy management. Mango	Rs. 40,000/ha	50% of the total cost subject to a maximum of Rs. 20,000/ha limited to two ha per beneficiary.	25.00	5.00	3.00	2.00		0.00				
Sub-total			25	5.00	3.00	2.00	0	0.00				
5												
(b) Naturally ventilated system												
(i) Tubular structure	Rs. 1060/Sq.m	50% of the cost limited to 4000 Sq.m per beneficiary.		0.00	0.00	0.00		0.00				
Hilly areas.	Rs. 1290/Sq.m	do		0.00	0.00	0.00		0.00				
(i) Tubular structure	Rs. 935/Sq.m (>500 Sq. m up to 1008 Sq. m)	50% of the cost limited to 4000 Sq.m per beneficiary.	2.00	93.50	56.10	37.40		0.00				
c) Plastic Mulching												
Plastic Mulching	Rs. 32,000/ha	50% of the total cost limited to 2 ha per beneficiary.	2000	320.00	192.00	128.00		0.00				
Plastic Mulching	Rs. 36,800/ha for hilly areas	50% of the total cost limited to 2 ha per beneficiary.		0.00	0.00	0.00		0.00				
d) Shade Net House												
(i) Tubular structure	Rs. 710/Sq.m	50% of cost limited to 4000 Sq.m per beneficiary.	5.00	177.50	106.50	71.00		0.00				
Plastic Tunnels	Rs. 60/Sq.m	50% of cost limited 1000 sq. m per beneficiary.	0.5	1.50	0.90	0.60		0.00				
Plastic Tunnels	Rs. 75/Sq.m for hilly areas.	50% of cost limited 1000 sq. m per beneficiary.		0.00	0.00	0.00		0.00				
Walk in tunnels	Rs. 600/ Sq.m	50% of the cost limited to 4000 sq.m. (each unit not to exceed 800 Sq. m per beneficiary).	0.5	15.00	9.00	6.00		0.00				
e) Anti Bird/Anti Hail Nets	Rs. 35/- per Sq.m	50% of cost limited to 5000 Sq.m per beneficiary.		0.00	0.00	0.00		0.00				

Statement Page 20/6/17 Page 5

	f) Cost of planting material & cultivation of high value vegetables grown in poly house	Rs. 140/Sq. m	50% of cost limited to 4000 Sq.m per beneficiary.	8	56.00	33.60	22.40	0.00				
	g) Cost of planting material & cultivation of Orchid & Anthurium under poly house/shade net house.	Rs. 700/Sq.m	50% of cost limited to 4000 Sq. m per beneficiary.		0.00	0.00	0.00	0.00				
	h) Cost of planting material & cultivation of Carnation & Gerbera under poly house/shade net house.	Rs. 610/Sq.m	50% of cost limited to 4000 Sq. m per beneficiary.	0.50	15.25	9.15	6.10	0.00				
	i) Cost of planting material & cultivation of Rose and lillium under poly house/shade net house	Rs. 426/Sq.m	50% of cost limited to 4000 Sq. m per beneficiary.	0.50	10.65	6.39	4.26	0.00				
	Sub-total protected cultivation			2017.00	689.40	413.64	275.76	0.00	0.00	0.00	0.00	
6	Promotion of Integrated Nutrient Management(INM)/ Integrated Pest											
	Promotion of IPM	Rs. 4000/ha	30% of cost subject to a maximum of Rs 1200/ha limited to 4.00 ha/ beneficiary.	5000	60.00	36.00	24.00	0.00				
	Sub-total INM / IPM			5000	60.00	36.00	24.00	0.00	0	0.00	0.00	
8	Pollination support through beekeeping											
	Production of nucleus stock (Public sector)	Rs. 20.00 lakh	100% of the cost.		0.00	0.00	0.00	0.00				
	Production of bee colonies by bee breeder	Rs. 10.00 lakh	40% of cost for producing min. of 2000 colonies / year		0.00	0.00	0.00	0.00				
	Honey bee colony	Rs.2000/colony of 8 frames	40% of cost limited to 50 colonies / beneficiary.	10000	80.00	48.00	32.00	80.00	10000	10000	80.00	
	Hives	Rs 2000/ per hive.	40% of cost limited to 50 colonies / beneficiary.	10000	80.00	48.00	32.00	80.00	10000	10000	80.00	
	Equipment including honey extractor (4 frame), food grade container (30 kg), net, etc.	Rs. 20,000/set	40% of the cost limited to one set per beneficiary.	2500	200.00	120.00	80.00	0.00			0.00	
	Sub-total			22500	360.00	216.00	144.00	160.00	20000.00	20000.00	160.00	
9	Horticulture Mechanization											
	i) Tractor (upto 20 PTO HP)	3.00 lakh/unit	25% of cost, subject to a maximum of Rs. 0.75 lakh/unit for general category farmers, and in the case if SC, ST, Small & Marginal farmers, women farmers and beneficiaries in NE states, 35% of cost, subject to a maximum of Rs. 1.00 lakh per unit.		0.00	0.00	0.00	0.00			0.00	
	i) Tractor (upto 20 PTO HP) (SC, ST, Small & Marginal farmers)	3.00 lakh/unit	25% of cost, subject to a maximum of Rs. 0.75 lakh/unit for general category farmers, and in the case if SC, ST, Small & Marginal farmers, women farmers and beneficiaries in NE states, 35% of cost, subject to a maximum of Rs. 1.00 lakh per unit.	20	20.00	12.00	8.00	0.00			0.00	
	ii) Power Tiller											

Signature:  Date: 20/10/17 Page 6 of 10

	a) Power tiller (below 8 BHP) (SC, ST, Small & Marginal farmers)	1.00 lakh per unit	Subject to a maximum of Rs.0.40 lakh/unit for general category farmers, and in the case if SC, ST, Small & Marginal farmers, women farmers and beneficiaries in NE states, subject of a maximum of Rs. 0.50 lakh/unit.	8	3.20	1.92	1.28			0.00	
	b) Power tiller (8 BHP & above)	1.50 lakh per unit	Subject to a maximum of Rs.0.60 lakh/unit for general category farmers, and in the case if SC, ST, Small & Marginal farmers, women farmers and beneficiaries in NE states, subject of a maximum of Rs. 0.75 lakh/unit.		0.00	0.00	0.00			0.00	
	b) Power tiller (8 BHP & above) (SC, ST, Small & Marginal farmers)	1.50 lakh per unit	Subject to a maximum of Rs.0.60 lakh/unit for general category farmers, and in the case if SC, ST, Small & Marginal farmers, women farmers and beneficiaries in NE states, subject of a maximum of Rs. 0.75 lakh/unit.		0.00	0.00	0.00			0.00	
	Sub-total			28	23	14	9	0	0		
	Technology Dissemination through demonstration/ Front Line Demonstration (FLD)	Rs. 25.00 lakh	75 % of cost in farmers' field and 100% of cost in farms belonging to Public Sector, SAUs etc. No change		0.00	0.00	0.00			0.00	Project to be submitted
	Private	Rs. 25.00 lakh	75 % of cost in farmers' field and 100% of cost in farms belonging to Public Sector, SAUs etc. No change	4	75.00	45.00	30.00			0.00	
	Total FLD			4	75.00	45.00	30.00			0.00	
10	Human Resource Development (HRD)										
	Skill Development			300	49.00	29.40	19.60			0.00	
	HRD for Supervisors & Entrepreneurs	Rs. 20.00 lakh / unit	100% of the cost in first year. In subsequent years, cost of infrastructure not to be claimed.		0.00	0.00	0.00			0.00	
	HRD for Gardeners	Rs. 15.00 lakh / unit	100% of the cost.		0.00	0.00	0.00			0.00	
	Training of farmers										
	Within the State	Rs. 1000/day per farmer including transport	100% of the cost.	1500	15.00	9.00	6.00			0.00	
	Outside the state	Project based as per actual.	100% of the cost.			0.00	0.00			0.00	
	(e) Exposure visit of farmers										
	Outside the State	Project based as per actual.	100% of the cost.	200	12.00	7.20	4.80			0.00	
	Outside India	Rs. 4.00 lakh / participant	Project Based. 100% of air/rail travel cost.		0.00	0.00	0.00			0.00	Project to be submitted
	Sub-total			2000.00	76.00	45.60	30.40	0.00	0.00		
11	INTEGRATED POST HARVEST MANAGEMENT										

Saravandh Singh
20/6/17 Page 7 of 10

Pack house / On farm collection & storage unit	Rs. 4.00 lakh/unit with size of 9Mx6M	50% of the capital cost.	20	40.00	24.00	16.00	10	20.00	Minutes of SLEC meeting to be submitted along with details of beneficiaries, location, etc to facilitate release of funds.
Integrated pack house with facilities for conveyer belt, sorting, grading units, washing, drying and weighing.	Rs. 50.00 lakh per unit with size of 9Mx18M	Credit linked back-ended subsidy @ 35% of the cost of project in general areas and 50% of cost in case Hilly & Scheduled areas, per beneficiary.							
a) General Area	Rs. 50.00 lakh per unit with size of 9Mx18M	Credit linked back-ended subsidy @ 35% of the cost of project in general areas and 50% of cost in case Hilly & Scheduled areas, per beneficiary.	14	250.00	150.00	100.00	1	17.50	
Cold Storage (Construction, Expansion and Modernisation)									
i) Cold storage units Type 1 - basic mezzanine structure with large chamber (of >250 MT)									
a) General Area	Rs. 8,000/MT, (max 5,000 MT capacity)	Credit linked back-ended subsidy @ 35% of the cost of project in general areas and 50% of cost in case Hilly & Scheduled areas, per beneficiary.	1	140.00	84.00	56.00		0.00	
b) Hilly Area	Rs. 8,000/MT, (max 5,000 MT capacity)	Credit linked back-ended subsidy @ 35% of the cost of project in general areas and 50% of cost in case Hilly & Scheduled areas, per beneficiary.		0.00	0.00	0.00		0.00	
ii) Cold Storage Unit Type 2 - PEB structure for multiple temperature and product use, more									
a) General Area	Rs. 10,000/MT, (max 5,000 MT capacity)	Credit linked back-ended subsidy @ 35% of the cost of project in general areas and 50% of cost in case Hilly & Scheduled areas, per beneficiary.	1	175.00	105.00	70.00		0.00	Project to be submitted
Refer vans/ containers (general areas)									
a) General Area	Rs. 26.00 lakh for 9 MT (NHM & HMNEH), and prorate basis for lesser capacity, but not below 4 MT.	Credit linked back-ended subsidy @ 35% of the cost of project in general areas and 50% of cost in case of Hilly & Scheduled areas, per beneficiary.	5	45.50	27.30	18.20		0.00	Project to be submitted
Low cost onion storage structure (25 MT)	Rs. 1.75 lakh/per unit	50% of the total cost.	400	350.00	210.00	140.00	119	104.13	Minutes of SLEC meeting to be submitted along with details of beneficiaries, location, etc to facilitate release of funds.
Pusa Zero energy cool chamber (100 kg)	Rs. 4000 per unit	50% of the total cost.		0.00	0.00	0.00		0.00	

Prasenjit Singh
20/11/17 Page 8 of 10

Integrated Cold Chain supply System

	a) General Area	Project Based. Project should comprise of minimum two components listed under C.1 to C.13 above, with maximum cost of Rs. 600.00 lakh.	Credit linked back-ended subsidy @ 35% of the cost of project in general areas and 50% of cost in case Hilly & Scheduled areas, per beneficiary.		1	210.00	126.00	84.00	0.00	
	Sub-total				442.29	1210.50	726.30	484.20	130.00	141.63
	ESTABLISHMENT OF MARKETING INFRASTRUCTURE FOR									
	Rural Markets/ Apni mandies/Direct markets									
	a) General Area	Rs. 25.00 lakh	Credit linked back-ended subsidy @ 40% of the capital cost of project in general areas and 55% in case of Hilly & Scheduled areas, per beneficiary.		2	20.00	12.00	8.00	0.00	Project to be submitted
	Retail Markets/ outlets (environmentally controlled)									
	a) General Area	Rs. 15.00 lakh /unit	Credit linked back-ended subsidy @ 35% of the capital cost of project in general areas and 50% in case of Hilly & Scheduled areas, per beneficiary.		10	52.50	31.50	21.00	0.00	Minutes of SLEC meeting to be submitted along with details of beneficiaries, location, etc to facilitate release of funds.
	Static/Mobile Vending Cart/ platform with cool chamber.	Rs. 30,000/ unit	50% of total cost.		25	3.75	2.25	1.50	0.00	Minutes of SLEC meeting to be submitted along with details of beneficiaries, location, etc to facilitate
	Sub-total				37.00	76.25	45.75	30.50	0.00	
	SPECIAL INTERVENTIONS									
	Innovative interventions not covered under any GOI schemes	10% of outlay	50% of cost, based on project proposal.				0.00	0.00	0.00	
	Tackling of emergent /unforeseen requirements of SHMs	Rs.20.00 lakh	50% of cost, based on project proposal.			0.00	0.00	0.00	0.00	
	Projectisation of end to end value chain in crop					145.80	87.48	58.32		
	Distribution of fruit trap bag					15.0	9.0	6.0		
	Distribution of Leno bag					1000000.0	10.0	4.0		
	Distribution of Plastic Crates					200000.0	40.0	16.0		
	Distribution of spawned compost for mushroom production					1000000.0	60.0	40.0		
	Cultivation of Gorgon Nut (Makhana) in Ponds					100.0	13.4	8.0	5.4	

1
Saranamdm Singh 20/6/17 Page 9 of 10

	Cultivation of Gorgon Nut (Makhana) in Fields condition				100.0	16.0	9.6	6.4		0.00
	Sub-total				320200.0	340.2	204.1	136.1	0	0.00
13	Mission Management									
	State & Districts Mission Offices and implementing agencies for administrative expenses, project, preparation, computerization, contingency etc.	5% of total annual expenditure on the basis of appraised needs to State Horticulture Mission (SHM) / implementing Agencies	100% assistance.			211.06	126.64	84.42		
	Seminars, conferences, workshops, exhibitions, Kisan Mela, horticulture shows, honey festivals etc.									
	State level	Rs. 3.00 lakh /event	100% assistance subject to a maximum of Rs.3.00 lakh per event of two days.	3	9.00	5.40	3.60			0.00
	District level	Rs. 2.00 lakh /event	100% assistance subject to a maximum of Rs.2.00 lakh per event of two days.	5	10.00	6.00	4.00			0.00
	Information dissemination through publicity, printed literature etc and local advertisements	Rs. 0.40 lakh/ block	100% of cost.		40.00	24.00	16.00			0.00
	Technical Support Group (TSG) at State Level for hiring experts/staff, studies, monitoring & concurrent evaluation/evaluation, mass media, publicity, video conference etc.	Project based, subject to a ceiling of Rs. 50.00 lakh per annum/state	100% of cost		20.00	12.00	8.00			
	Baseline survey and Strengthening horticultural statistical data base	Rs. 100.00 lakh for large states, Rs. 50.00 lakh for small states and Rs. 25.00 lakh for very small states/ UTs.	100% of cost as one time grant on survey related activities.		25.00	15.00	10.00			0.00
	Sub-total			8.00	315.06	189.04	126.02			0.00
	Grand Total			355856.9	4385.00	2631.00	1754.00	20434.0		725.63

Satamendh Singh 20/06/2017

