

F. No. 33-36/2017-MIDH (AAP)
Government of India
Ministry of Agriculture
Department of Agriculture & Cooperation
(Horticulture Division)

Room No.- 434
Krishi Bhawan, New Delhi
Dated: 30th June, 2017

To

Director of Agriculture Port Blair
Andaman & Nicobar Islands
Pin code- 744102.

Subject: Implementation of National Horticulture Mission (NHM) under Mission for Integrated Development of Horticulture (MIDH) programme- Approval of Annual Action Plan (AAP) 2017-18-regarding.

Sir,

I am directed to convey approval for implementation of National Horticulture Mission (NHM) programme under MIDH in the State of **Andaman & Nicobar Islands** during 2017-18 with total outlay of **Rs. 363.74 lakh** (including Rs. 163.74 Lakh Spill over activity/ unspent balance) as per following details:

(Rs. In lakh)	
Item	Total
Total Outlay-2017-18	200.00
Spill over Activity/ Unspent Balance	163.74
Total	363.74

2. The component wise details of Annual Action Plan, 2017-18 indicating physical targets and financial outlay are enclosed. Details are also available on NHM website. The approval is subject to the following terms and conditions:-
- I. The State Horticulture Mission (SHM) may start implementation of the programme for activities other than project-based and submit the proposals for project based activities for approval of Empowered Committee of MIDH. For the project based activities, for which powers have been delegated to State Level Executive Committee (SLEC), the minutes of SLEC meeting wherein projects are approved may be furnished to this Department along with details of beneficiaries, location, bank loan, etc. to facilitate release of funds.
 - II. Expenditure on approved activities shall be in conformity with the norms laid down in the operational guidelines of the scheme.
 - III. SHM should make advance arrangement for procurement of planting material from accredited nurseries/certified planting material/certified seeds for ensuing season. SHM should have a mechanism in place for the proper certification and distribution of planting material/seeds. Sourcing of planting material/seeds from ICAR institutes, SAUs, KVKs and Government Department is to be given priority over other sources.

Subs...

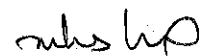
- Area Expansion shall be restricted to availability of planting material from accredited nurseries/certified Planting Material.** In case of Truthfully Labelled (TL) seeds, it should be procured only from public sector agencies. Merely procurement of the planting material/seed through the public sector agencies like Seed Corporation, Agro Corporation and other agencies do not ensure the quality of planting material/seed as they do not produce the same. SHM should ensure that these public sector agencies procure certified material and in case certified material is not available, seedlings/ TL seeds are to be procured only from ICAR institutes, SAUs, KVKs and Government Departments.
- IV. More focus is to be given on enhancing productivity of horticulture crops for the holistic development supported with infrastructure for Pre- and Post- Harvest Management and Marketing.
 - V. To improve the productivity of existing old and senile orchards, there is need to identify gaps and revise the existing strategy for achieving the desired results. A proper mechanism needs to be devised to disseminate technology and train farmers on rejuvenation technology. Exposure visit of farmers should be organized to those institutes/ places where rejuvenation technology has been developed and also adopted by the farmers. Chief Consultants under NHM will visit the State and discuss this matter with the SHM.
 - VI. The programme for protected cultivation and lining of Community tanks/ponds should be taken up in close coordination with the Precision Farming Development Centre (PFDC) in the State.
 - VII. Protected Cultivation of vegetables should be promoted under NHM in clusters around major cities/metros. These clusters may be provided with other infrastructural facilities like pre-cooling units, cold storages, reefer vans, vending carts etc. and marketing arrangements may be tied up by linking with cooperatives/private retail chains like SAFAL, farmer markets.
 - VIII. Organic farming should be linked to certification. No separate funds will be provided for adoption of organic farming alone. Arrangements should also be made by the SHM or concerned agency for the marketing of organic produce. Selection of Service Provider Agencies is to be done by adoption of competitive bidding.
 - IX. IPM measures should be need based and are to be taken after clearly identifying the problem of pests/disease in the clusters. INM measures are to be adopted in the clusters to correct soil deficiency and reduce excessive dependence on chemical fertilizers.
 - X. The creation of water harvesting structure should be implemented in conjunction with Mahatma Gandhi National Rural Employment Guarantee Scheme (MNREGA) wherever feasible and should be compulsorily linked with the new area expansion and micro-irrigation programmes.
 - XI. For implementation of horticulture mechanization, PHM, marketing and mobile/primary processing activities, SHM should make efforts to organize self-help groups, farmers' interest groups, growers association at local level and also involve Panchayats, Cooperatives, Producers Company etc. In this regard, SHM is to play pro-active role and should appoint one senior level officer as nodal officer and make him responsible for these components.
 - XII. Efforts should also be made for the buyback arrangements of the horticulture produce.
 - XIII. SHM should involve State Agricultural University and ICAR Institutes in the State for the extension activities under NHM.
 - XIV. SHM shall document the Annual Report and success stories and furnish them to DAC&FW.

Subho

- XV. The SHM should also conduct Impact Evaluation Study through independent organization of repute in the State.
- XVI. While implementing the NHM programme, convergence and synergy should be ensured with the other schemes like Micro Irrigation, RKVY, PKVY, MNREGS, National Mission on Medicinal Plants, AEZs of APEDA, Tribal Sub Plan, Mega Food Parks of Ministry of Food Processing Industries, Watershed Development Programmes, BRGF and Schemes of the State Government.
- XVII. The Audited Statement of Accounts (ASA) for 2015-16 and Utilization Certificate for 2016-17, if not submitted so far, should be furnished to facilitate release of funds during 2017-18.
- XVIII. According to the provisions of the Fiscal Responsibilities and Budget Management (FRBM) Act, 2003 and Rules thereof, regular feedback from the implementing agencies on the physical and financial progress of the activities is necessary for periodical review.
- XIX. The monthly physical and financial progress may be posted on the website www.nhm.nic.in by the 5th of every month and certified hard copy be furnished to this Department by the 10th of every month following the month under report.. Status of project based proposals need also to be uploaded on NHM website.
- XX. It may be noted that the release of funds would be subject to the furnishing of requisite information as mentioned above. In addition to that, a mid-term review would be undertaken at appropriate time.
3. The SHM is also requested to implement the scheme keeping in view the broad discussions held during review meeting held on 2nd – 3rd May, 2017.
4. SHM is also requested to furnish the justification in respect of unspent balance available with the state prior to 2016-17 for revalidation from IFD.

Encl: as above

Yours faithfully,



(M.K. Mishra)

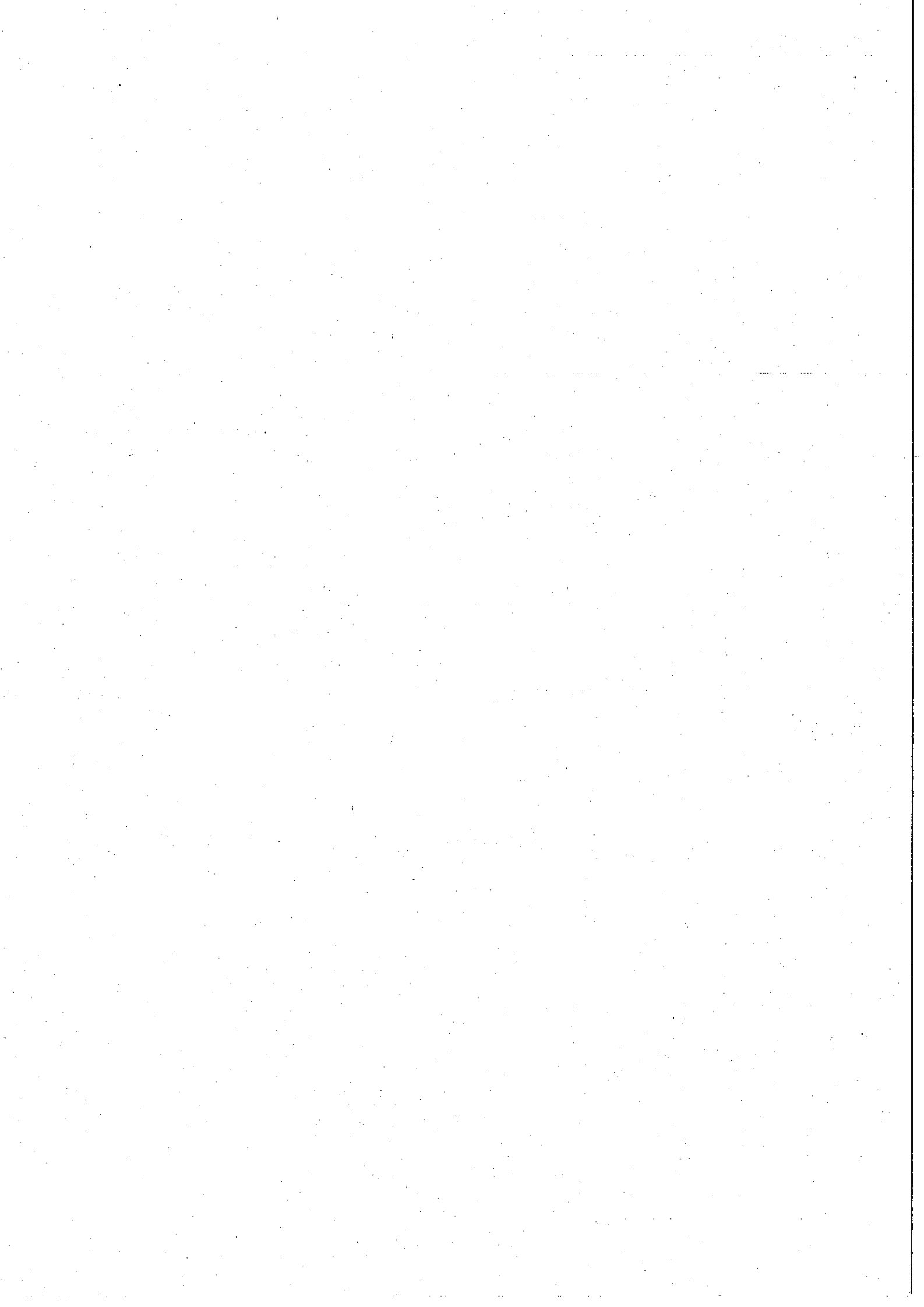
Under Secretary (MIDH)

Ph. No. 011-23074238

Email: mrityunjaya.m@nic.in

Copy to:

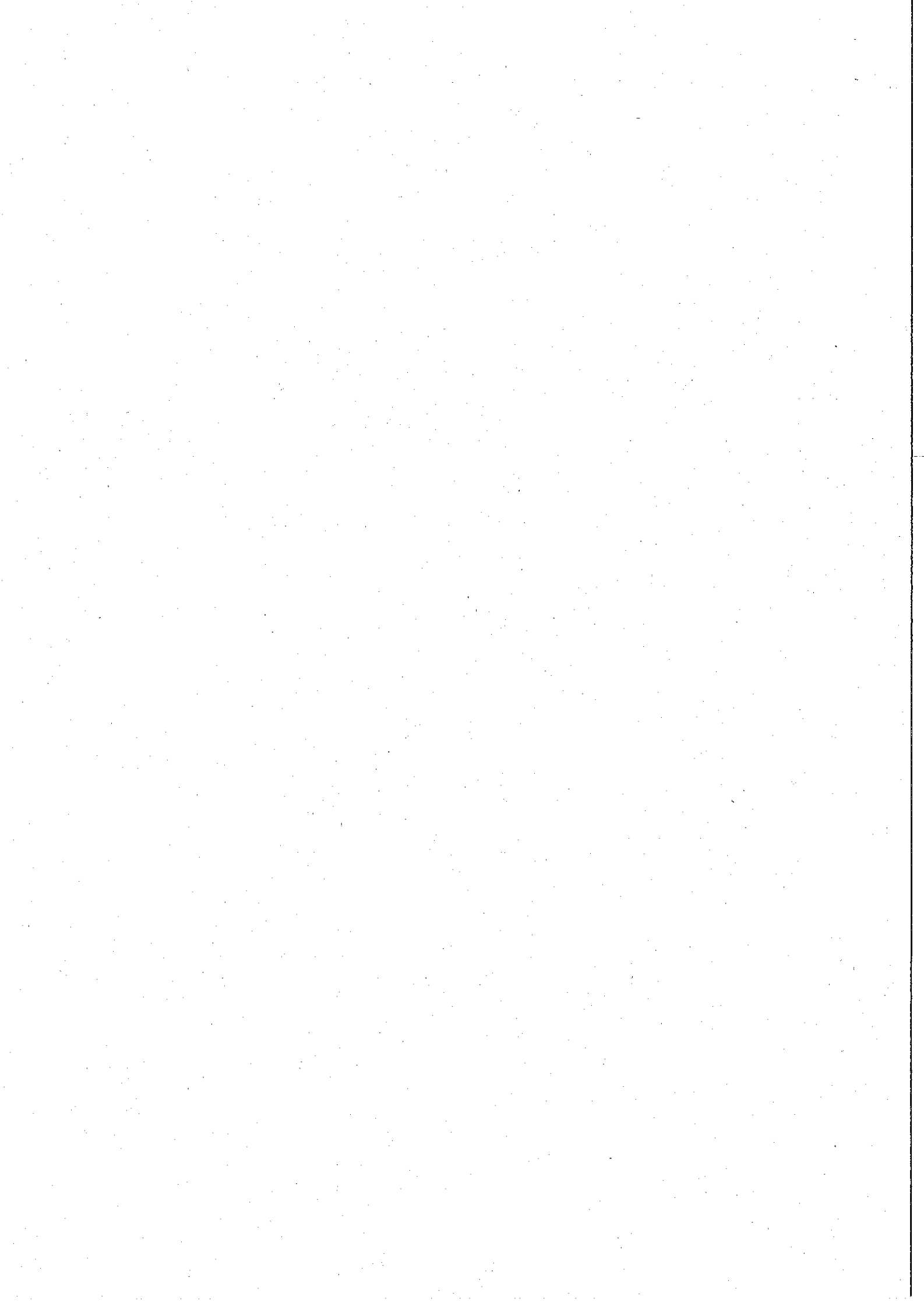
1 Tech. Dir.(NIC) for uploading



Summary of Action Plan 2017-18: Andaman & Nicobar Islands

S.No	Component	Unit	2017-18			Spill Over	
			Phy Target	Fin. Outlay	% of Outlay	Phy Target	Fin. Outlay
1	Nursery and planting Materials	No.	2	22.50	11.25	2.00	113.74
2	Establishment of new gardens	Ha.	96	26.91	13.46	40.03	14.69
3	Mushroom Production	Ha.	0	0.0	0.00	0.00	0.00
4	Maintenance 1 & 2 Year	Ha.	54	4.50	2.25	38.71	3.40
5	Rejuvenation/ replanting	Ha.	30	6.00	3.00	0.00	0.00
9	Post Harvest Management	No.	2	15.00	7.50	0.00	0.00
10	Food Processing	No.	0	0.00	0.00	0.00	0.00
11	Markets	No.	2	22.00	11.00	0.00	0.00
13	Protected cultivation	Ha.	4.86	49.19	24.59	5.38	16.67
14	Horticulture Mechanization	No.	18	6.60	3.30	0.00	0.09
15	Beekeeping	No.	400	5.00	2.50	664.00	8.91
16	Human Resource Development	No.	12	28.00	14.00	0.00	0.00
19	Others (Awareness, Survey,)		0	4.50	2.25	0.00	0.00
20	Mission Management			9.80	4.90	0.00	6.25
	Total			200.00	100.00	750.12	163.74

Subho



Annual Action Plan of NHM States, 2017-18

Action Plan 2017-18

(Rs. in Lakh)

S. No	Activity	Maximum permissible cost	Pattern of Assistance	AAP 2017-18		Spill Over		Remarks
				Phy Target	Fin. Outlay (100% GOI Share)	Phy Target	Fin. Outlay	
1	2	3	4		6		6	
Plantation Infrastructure and Development								
Production of planting material Public Sector								
Small Nursery (1 ha)								
a)	Public Sector	Rs. 15 lakh/one ha unit	100% to public sector and in case of private sector, credit linked back-ended subsidy @ 50% of cost, subject to a maximum of Rs. 7.50 lakh/unit, as project based activity. Each nursery will produce a minimum of 25,000 numbers of mandated perennial vegetatively propagated fruit plants/tree spices/plantation crops aromatic plants, per year, duly certified for its quality.	1	15.00	1	13.74	Minutes of SLEC meeting to be submitted along with details of beneficiaries, location, bank loan etc. to facilitate release of funds.
b)	Private Sector	Rs. 15 lakh/one ha unit	100% to public sector and in case of private sector, credit linked back-ended subsidy of cost, subject to a maximum of Rs. 7.50 lakh/unit, as project based activity. Each nursery will produce a minimum of 25,000 numbers of mandated perennial vegetatively propagated fruit plants/tree spices/plantation crops per year, aromatic plants, duly certified for its quality.	1	7.50		0.00	do
Setting up of new TC Units.								
a)	Public Sector	Rs. 250.00 lakh	100% of cost to public sector		0.00		0.00	Project to be submitted
b)	Private sector	Rs. 250.00 lakh	40% of cost to private sector		0.00	1	100.00	Project to be submitted
	Sub-total Planting material			2.00	22.50	2.00	113.74	
2	Establishment of new gardens / Area Expansion							
Fruit crops other than cost intensive crops using normal spacing (For a maximum area of 4 ha per beneficiary)								
Fruits - Perennials								
(a) Cost intensive crops								
Fruit crops like Grape, Kiwi, Passion fruit etc.								

subsidy

a) Integrated package with drip irrigation and trellis.	Rs. 4.00 lakh/ha.	Maximum of Rs. 1.60 lakh/- per ha. (40% of cost) for meeting the expenditure on planting material and cost of material for drip irrigation, trellises and INM/IPM, in 3 installments of 60:20:20 subject to survival rate of 75% in 2 nd year and 90% in 3rd year).		0.00		0.00
b) Without integration	Rs. 1.25 lakh/ha	Maximum of Rs. 0.50 lakh/ha (40% of cost) for meeting the expenditure on planting material and cost of INM/IPM in three installments of 60:20:20 subject to survival rate of 75% in 2 nd year and 90% in 3rd year. For (a) and (b) above, in the case of TSP areas, Andaman & Nicobar and Lakshadweep Islands, assistance will be @ 50% of cost.	15	2.70	4	0.74
Sub total						
Maintenance without Integration						
1st Year			5	0.30	11	0.68
2nd Year			22	1.32	6	0.36
Sub total maintenance			27	1.62	18	1.04
iii) Banana (sucker)						
b) Without integration	Rs.87,500/ha	Maximum of Rs. 0.35 lakh/ha (40% of cost) for meeting the expenditure on planting material and cost of INM/IPM in 2 installments (75:25). For (a) and (b) above, in the case of TSP areas, Andaman & Nicobar and Lakshadweep Islands, assistance will be @ 50% of cost in 2 installments.	15	4.92	12.17	3.75 ^{2m x 2m}
Sub total						
Maintenance without Integration						
1st Year			25	2.70	10.84	1.22
Sub total maintenance			25	2.70	10.84	1.22
iv) Pineapple (sucker)						

sub total

b) Without integration	Rs.87,500/ha	Maximum of Rs. 0.35 lakh/ha (40% of cost) for meeting the expenditure on planting material and cost of INM/IPM in 2 installments (75:25). For (a) and (b) above, in the case of TSP areas, Andaman & Nicobar and Lakshadweep Islands, assistance will be @ 50% of cost in 2 installments (75:25).	1	0.33	0.7	0.23	
Sub total			1	0.33	0.7	0.23	
Maintenance without Integration							
1st Year			1	0.11	1.10	0.13	
Sub total maintenance			1	0.11	1.10	0.13	
v) Banana (TC)							
b) Without integration	Rs. 1.25 lakh/ha.	Max of Rs. 0.50 lakh per ha, (40% of cost) for meeting the expenditure on planting material and cost of INM/IPM in 2 installments (75:25). For (a) and (b) above, in the case of TSP areas, Andaman & Nicobar and Lakshadweep Islands, assistance will be @ 50% of cost in 2 installments (75:25).	10	4.69			(1.8m x 1.8m)
Sub total			10	4.69	0	0.00	
Maintenance without Integration							
1st Year				0.00	9	1.00	
Sub total maintenance			0.00	0.00	9.00	1.00	
vii) Papaya							
b) Without integration	Rs. 60,000/ha	Maximum of Rs. 0.30 lakh/ha (50 % of cost) for meeting the expenditure on planting material and cost of INM/IPM in 2 installments (75:25). For (a) and (b) above, in the case of NE and Himalayan States, TSP areas, Andaman & Nicobar and Lakshadweep Islands, assistance will be @ 50% of cost in 2 installments (75:25).	1.0	0.23	1.6	0.36	(1.8m x 1.8m)
Sub total			1	0.23	1.6	0.36	
Maintenance without Integration							
1st Year			1	0.08	0.2	0.02	
Sub total maintenance			1	0.08	0.2	0.02	
Vegetable (For maximum area of 2 ha per beneficiary)							

Sub total

	Hybrid	Rs.50,000/ ha	40% of cost in general areas	5	1.25		0.00
	Sub-total			5.00	1.25	0	0.00
3	Flowers (For a maximum of 2 ha per beneficiary)						
	Cut flowers						
	Small & Marginal Farmers	Rs. 1.00 lakh/ha	40% of cost	2.0	1.00		0.00
	Bulbous flowers						
	Small & Marginal Farmers	Rs. 1.50 lakh/ha	40 % of the cost	5.0	3.75	10.0	7.50
	Loose Flowers						
	Small & Marginal Farmers	Rs. 40,000/ha	40% of cost	15.0	3.00	8.0	1.58
	Sub-total flowers			22.0	7.75	18.0	9.08
4	Spices (For a maximum area of 4 ha per beneficiary)						
	Seed spice and Rhizomatic spices (ginger & turmeric)	Rs.30,000/ha	Maximum of Rs. 12,000/- per ha. (40% of cost) for meeting the expenditure on planting material and cost of material for INM/IPM etc).	7	1.05	3.6	0.54
	Perennial spices (black pepper, clove, cinnamon)	Rs. 50,000/ha	Maximum of Rs. 20,000/- per ha (@40% of cost) for meeting the expenditure on planting material and cost of material for INM/IPM etc. For (i) and (ii) above, in the case of TSP areas, Andaman and Lakshadweep Islands, assistance will be @ 50% of cost.	10	2.50		0.00
	Sub-total spices			17	3.55	3.6	0.54
	Plantation crops (For a maximum area of 4 ha per beneficiary)						
	Cashew						
	b) Without integration	Rs. 50,000/ha	Rs.0.20 lakh per ha (40 % of cost) for meeting the expenditure on planting material and cost of material for INM/IPM in 3 installments of 60:20:20 subject to survival rate of 75% in second year and 90% in third year for a maximum area of 4 ha per beneficiary. For (a) and (b) above, in the case of TSP areas, Andaman & Nicobar and Lakshadweep Islands assistance will be @ 50% of cost in 3 installments.	10	1.50		0.00
	Sub-total			10	1.50	0	0.00
	Grand Total Area Expansion			96.00	26.91	40.03	14.69
	Grand Total Area Expansion maintenance			54.00	4.50	38.71	3.40
	Mushrooms						

sub total

Production unit		Rs. 20.00 lakh/ unit	40% of cost for private sector, for meeting the expenditure on infrastructure, as credit linked back ended subsidy.															
Private Sector																		
Spawn making unit																		
Private Sector		Rs. 15 lakh/ unit	40% of cost for private sector, for meeting the expenditure on infrastructure, as credit linked back ended subsidy.															
Sub-total mushroom																		
5	Rejuvenation/ replacement of senile plantation including Canopy management. Mango	Rs. 40,000/ha	50% of the total cost subject to a maximum of Rs. 20,000/ha limited to two ha per beneficiary.															
	Sub-total																	
5	Protected cultivation																	
(b) Naturally ventilated system																		
	i) Tubular structure	Rs. 1060/Sq.m	50% of the cost limited to 4000 Sq.m per beneficiary.															
	ii) Wooden structure	Rs. 621/Sq. m for hilly areas	50% of the cost limited to 20 units (each unit not to exceed 200 Sq.m per beneficiary).															
c) Plastic Mulching																		
	Plastic Mulching	Rs. 32,000/ha	50% of the total cost limited to 2 ha per beneficiary.															
	Plastic Mulching	Rs. 36,800/ha for hilly areas	50% of the total cost limited to 2 ha per beneficiary.															
d) Shade Net House																		
	i) Tubular structure	Rs. 710/Sq.m	50% of cost limited to 4000 Sq.m per beneficiary.															
	i) Tubular structure	Rs. 816/Sq.m for hilly areas	50% of cost limited to 4000 Sq.m per beneficiary.															
	ii) Wooden structure	Rs. 492/Sq.m	50% of cost limited to 20 units (each unit not to exceed 200 Sq.m) per beneficiary.															
	iii) Bamboo structure	Rs. 360/Sq.m	50% of cost limited to 20 units (each unit not to exceed 200 sq. m) per beneficiary.															
	Plastic Tunnels	Rs. 60/Sq.m	50% of cost limited 1000 sq. m per beneficiary.															
	i) Cost of planting material & cultivation of high value vegetables grown in poly house	Rs. 140/Sq. m	50% of cost limited to 4000 Sq.m per beneficiary.															
	Sub-total protected cultivation																	
8	Pollination support through beekeeping																	
	Honey bee colony	Rs.2000/colony of 8 frames	40% of cost limited to 50 colonies / beneficiary.															
	Sub-total																	
		4.86																
		49.19																
		125																
		1.00																
		5.38																
		16.67																
		114																
		0.91																

To be implemented as per guideline s circulated

msb

	Hives	Rs 2000/ per hive.	40% of cost limited to 50 colonies / beneficiary.	250	2.00	500	4.00	
	Equipment including honey extractor (4 frame), food grade container (30 kg), net, etc.	Rs. 20,000/set	40% of the cost limited to one set per beneficiary.	25	2.00	50	4.00	
	Sub-total			400	5.00	664	8.91	
9	Horticulture Mechanization							
	ii) Power Tiller							
	a) Power tiller (below 8 BHP) (SC, ST, Small & Marginal farmers)	1.00 lakh per unit	Subject to a maximum of Rs.0.40 lakh/unit for general category farmers, and in the case if SC, ST, Small & Marginal farmers, women farmers and beneficiaries in NE states, subject of a maximum of Rs. 0.50 lakh/unit.	8	3.00		0.09	
	b) Power tiller (8 BHP & above)	1.50 lakh per unit	Subject to a maximum of Rs.0.60 lakh/unit for general category farmers, and in the case if SC, ST, Small & Marginal farmers, women farmers and beneficiaries in NE states, subject of a maximum of Rs. 0.75 lakh/unit.	5	3.00		0.00	
	(iii) Tractor/Power tiller (below 20 BHP) driven equipments							
	a) Land Development, tillage and seed bed preparation equipments	0.30 lakh per unit	Subject to a maximum of Rs.0.12 lakh/unit for general category farmers, and in the case if SC, ST, Small & Marginal farmers, women farmers and beneficiaries in NE states, subject of a maximum of Rs. 0.15 lakh/unit.		0.00		0.00	
	1) General	-do-	-do-	5	0.60		0.00	
	Sub-total			18	6.60	0	0.09	
10	Human Resource Development (HRD)							
	Skill Development				0.00		0.00	Rs.16420/ farmer for 200 hours training (100%of the cost)
	HRD for Supervisors & Entrepreneurs	Rs. 20.00 lakh / unit	100% of the cost in first year. In subsequent years, cost of infrastructure not to be claimed.		0.00		0.00	
	HRD for Gardeners	Rs. 15.00 lakh / unit	100% of the cost.		0.00		0.00	
	Training of farmers							

Within the State	Rs. 1000/day per farmer including transport	100% of the cost.			0.00				
Outside the state	Project based as per actual.	100% of the cost.			6.75				
(e) Exposure visit of farmers									
Outside the State	Project based as per actual.	100% of the cost.			6.75				
Outside India	Rs. 4.00 lakh / participant	Project Based. 100% of air/rail travel cost.		1.00	4.00			0.00	Project to be submitted
Training / study tour of technical staff/ field functionaries									
Study tour to progressive States/ units (group of minimum 5 participants)	Rs.800/day per participant plus TA/DA, as admissible	100% of the cost.		10	4.50				
Outside India	Rs. 6.00 lakh / participant	100% of the cost on actual basis.		1	6.00				Project to be submitted
Sub-total				12	28.00	0	0.00		
11 INTEGRATED POST HARVEST MANAGEMENT									
Pack house / On farm collection & storage unit	Rs. 4.00 lakh/unit with size of 9Mx6M	50% of the capital cost.		1	2.00			0.00	Minutes of SLEC meeting to be submitted along with details of beneficiaries, location, etc
Refer vans/ containers (general areas)									
b) Hilly Area	Rs. 26.00 lakh for 9 MT (NHM & HMINMH), and prorata basis for lesser capacity, but not below 4 MT.	Credit linked back-ended subsidy @ 35% of the cost of project in general areas and 50% of cost in case of Hilly & Scheduled areas, per beneficiary.		1	13.00			0.00	Project to be submitted
Sub-total				2.00	15.00	0.00	0.00		
12 ESTABLISHMENT OF MARKETING INFRASTRUCTURE FOR Wholesale markets									
a) General Area	Rs.100.00 crore/project	Credit linked back-ended subsidy @ 25% of the capital cost of project in general areas and 33.33% in case of Hilly & Scheduled areas for individual entrepreneurs.		1	10.00			0.00	Project to be submitted
Rural Markets/ Apni mandies/Direct markets									
a) General Area	Rs. 25.00 lakh	Credit linked back-ended subsidy @ 40% of the capital cost of project in general areas and 55% in case of Hilly & Scheduled areas, per beneficiary.			0.00			0.00	Project to be submitted

ans me

b) Hilly Area	Rs. 25.00 lakh	Credit linked back-ended subsidy @ 40% of the capital cost of project in general areas and 55% in case of Hilly & Scheduled areas, per beneficiary.	1	12.00	0.00	Project to be submitted
Total MKT			2.00	22.00	0.00	
Mission Management						
State & Districts Mission Offices and implementing agencies for administrative expenses, project, preparation, computerization, contingency etc.	5% of total annual expenditure on the basis of appraised needs to State Horticulture Mission (SHM) / implementing Agencies	100% assistance.		9.80	5.68	
Seminars, conferences, workshops, exhibitions, Kisan Mela, horticulture shows, honey festivals etc.						Minutes of SLEC meeting to be submitted along with details of beneficiaries, localton, etc to facilitate release of funds.
State level	Rs. 3.00 lakh /event	100% assistance subject to a maximum of Rs.3.00 lakh per event of two days.		0.00		
District level	Rs. 2.00 lakh /event	100% assistance subject to a maximum of Rs.2.00 lakh per event of two days.		0.00		
Information dissemination through publicity, printed literature etc and local advertisements	Rs. 0.40 lakh/ block	100% of cost.		0.00		
Technical Support Group (TSG) at State Level for hiring experts/staff, studies, monitoring & concurrent evaluation/evaluation, mass media, publicity, video conference etc.	Project based, subject to a ceiling of Rs. 50.00 lakh per annum/state	100% of cost		4.50	0.57	
Sub-total			0.00	14.30	6.25	
Grand Total			620.36	200.00	750.12	163.74

sub-*wp*